

# THE MANTON

*Bowman Facade*

HUNTER  
HOMES



210

# THE MANTON

Bowman Facade

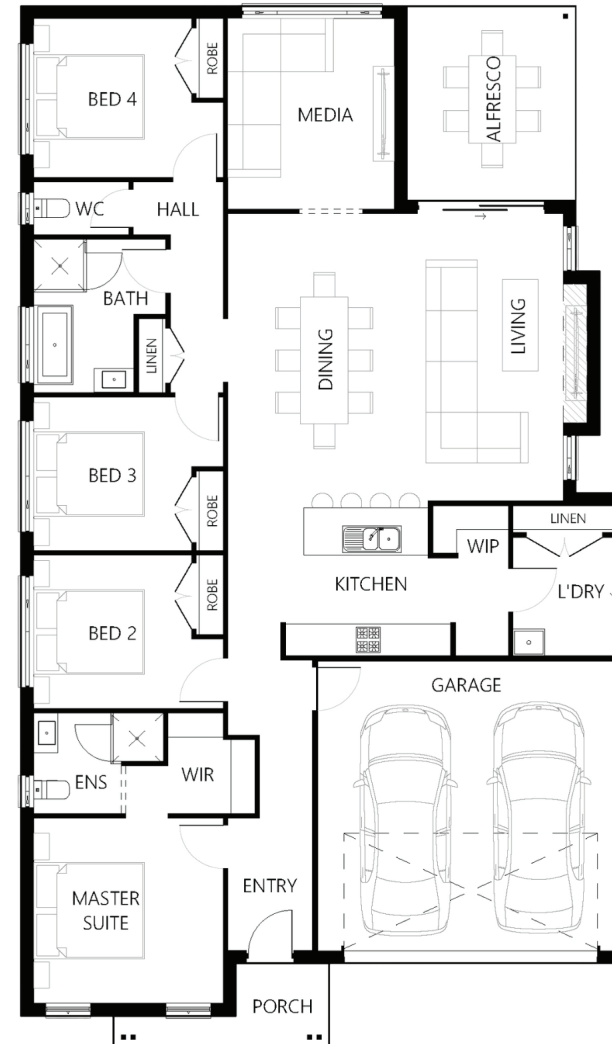
## Description

The Manton 210 is a great design which utilises space well. All four bedrooms are located to one side of the home with the master suite situated at the front with a generous walk in robe and ensuite. The open plan living area is adjacent to the galley style kitchen with a walk in pantry and access to the laundry. This open plan area is also connected to the media room and alfresco making this a great space to enjoy family time together or entertain guests away from the privacy of the bedrooms.

<b>Bedrooms</b>	4
<b>Bathrooms</b>	2
<b>Car Garage</b>	2
<hr/>	
<b>Total m<sup>2</sup></b>	210.03
<b>Total sqs</b>	22.61
<b>Width (m)</b>	11.57
<b>Length (m)</b>	19.72

# 210

[hunterhomesnsw.com](http://hunterhomesnsw.com)



Floor plan not drawn to scale

