

HUNTER HOMES

live WITH HEART 



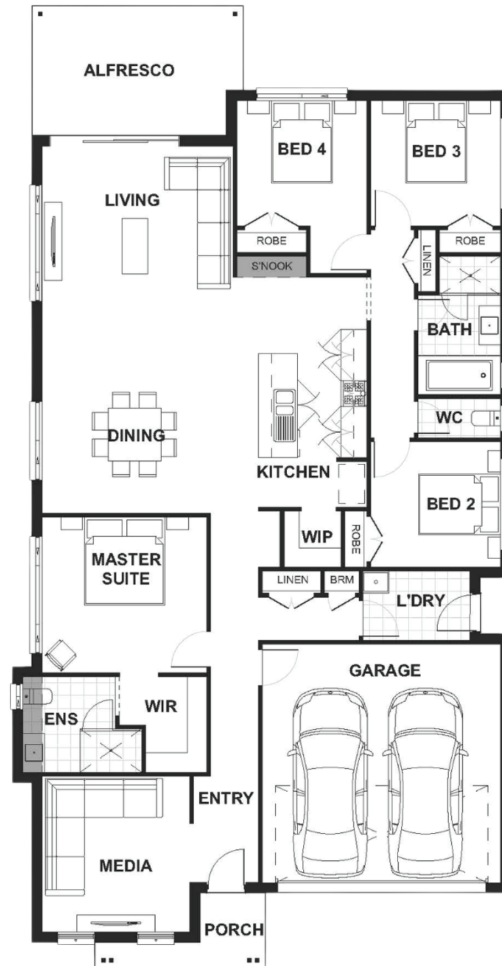
WISEMAN FACADE



Total (sqsq.)	23.98	Width (m)	11.51
Total (m ²)	222.73	Length (m)	22.22

Description

The Riverlea 222 is a great design which utilises space for a growing family. The master suite is located centrally within the home with a walk in robe and ensuite. The other three bedrooms are well located within the home. The open plan dining/living area is adjacent to the galley style kitchen with a walk in pantry and an island bench. This open living area is also connected to the alfresco making this a great space to enjoy family time together.



Terms and Conditions: Images shown on this brochure are approximate and for illustration purposes only, these plans may not be drawn to scale. Façades and other images on this brochure may be shown as optional upgrades or not included, additional fixtures and finishes that are featured on this document may not be included in the base cost such as landscaping, tiling, decking, furniture, feature lighting, pools, driveways etc. Hunter Homes reserves the right to change plans and inclusions at any time. All designs that are developed remain the property of Hunter Homes Pty Ltd under copyright law & we retain & claim all rights to these plans. Changing plans by 50% or more does not avoid legal responsibility for a copyright breach.

1300 BUY HOME

See our website for Display locations
www.hunterhomesnsw.com

love YOUR HUNTER HOME

Riverlea 222