

HUNTER HOMES

live WITH HEART 



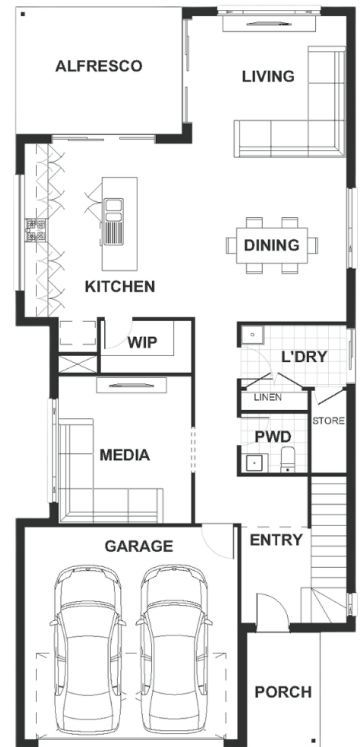
YVES FACADE



Total (sq.s.)	35.19	Width (m)	8.8
Total (m²)	326.88	Length (m)	20.15

Description

The Cypress 327 has been designed to live a grandiose lifestyle with all the mod cons. Upon entering the home, you will be automatically drawn to the void at the entry. The first level includes a master suite located at the front of the home complete with a his and hers spacious wardrobe and ensuite with a double basin. Off the top of the stairs there is a study and three bedrooms which surround a family bathroom. A rumpus room completes this top level with access to the enormous main deck. Downstairs there is a private media room, galley style kitchen with an island bench and walk in pantry along with open plan living/dining area. The living and kitchen area connect to the alfresco making it a perfect space for entertaining.



Terms and Conditions: Images shown on this brochure are approximate and for illustration purposes only, these plans may not be drawn to scale. Façades and other images on this brochure may be shown as optional upgrades or not included, additional fixtures and finishes that are featured on this document may not be included in the base cost such as landscaping, tiling, decking, furniture, feature lighting, pools, driveways etc. Hunter Homes reserves the right to change plans and inclusions at any time. All designs that are developed remain the property of Hunter Homes Pty Ltd under copyright law & we retain & claim all rights to these plans. Changing plans by 50% or more does not avoid legal responsibility for a copyright breach.

1300 BUY HOME

See our website for Display locations
www.hunterhomesnsw.com

love YOUR HUNTER HOME

Cypress 327