

# HUNTER HOMES

live WITH HEART 



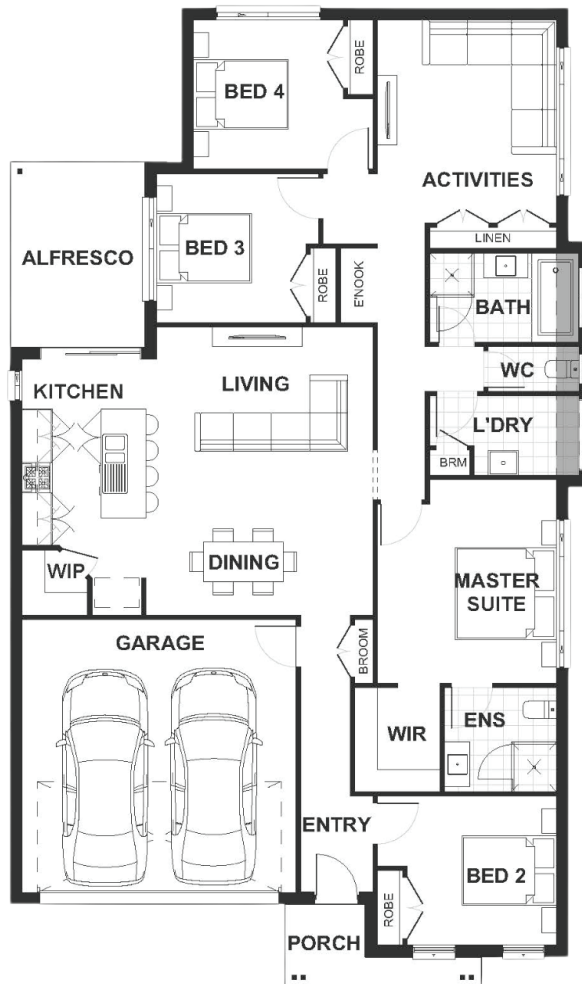
## HILLSBOROUGH FACADE



Total (sq.s.)	21.78	Width (m)	11.66
Total (m²)	202.29	Length (m)	19.71

### Description

The Stanford 202 combines space, practicality, and privacy. The four bedrooms include a teenager's retreat located at the front of the home with a grand master suite complete with a walk in wardrobe and good size ensuite, which is tucked away off the main living/dining area proving additional privacy. The remaining two bedrooms are adjacent to the substantial size activities room and includes a functioning electrical nook for all those home tech devices. The open plan living area is central to the home with a galley style kitchen, walk-in pantry and island bench overlooking the living and dining areas. This area connects to a versatile alfresco which is ideal for indoor and outdoor living.



**Terms and Conditions:** Images shown on this brochure are approximate and for illustration purposes only, these plans may not be drawn to scale. Façades and other images on this brochure may be shown as optional upgrades or not included, additional fixtures and finishes that are featured on this document may not be included in the base cost such as landscaping, tiling, decking, furniture, feature lighting, pools, driveways etc. Hunter Homes reserves the right to change plans and inclusions at any time. All designs that are developed remain the property of Hunter Homes Pty Ltd under copyright law & we retain & claim all rights to these plans. Changing plans by 50% or more does not avoid legal responsibility for a copyright breach.

1300 BUY HOME

See our website for Display locations  
[www.hunterhomesnsw.com](http://www.hunterhomesnsw.com)

love YOUR HUNTER HOME

Stanford 202 Mid Master