

# THE LOVEDALE

*Tuscany Facade*

HUNTER  
HOMES



262

# THE LOVEDALE

Tuscany Facade

## Description

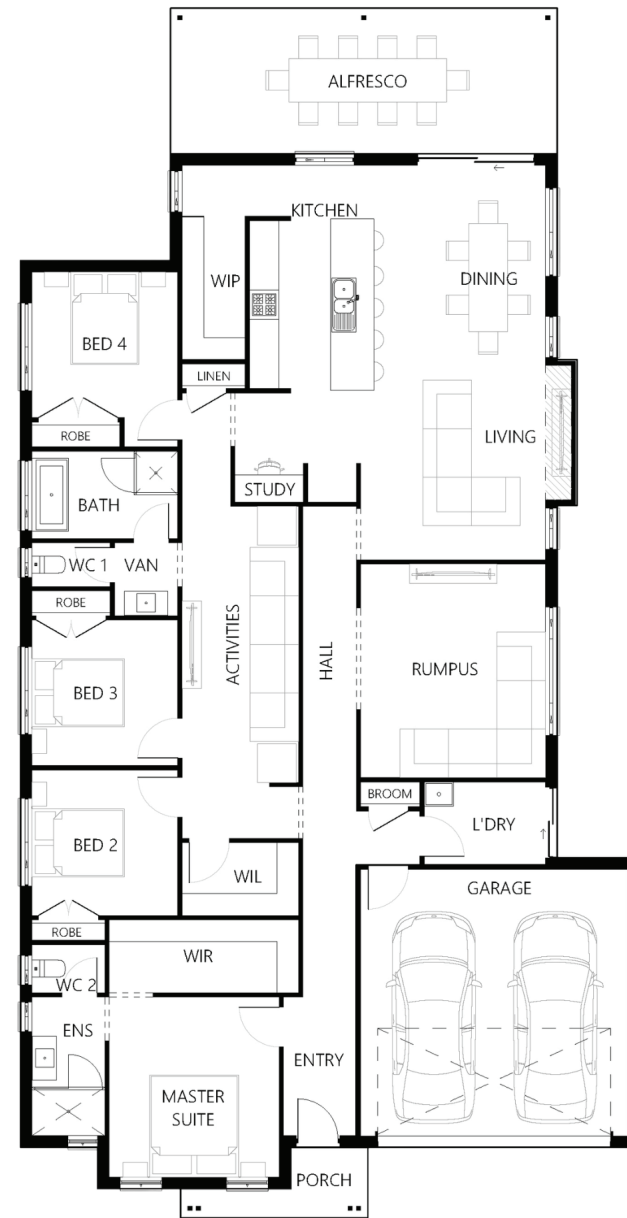
The Lovedale 262 is the ultimate four bedroom family home you have been searching for. From the expansive living area to the cleverly located bedrooms, every part of this home says 'luxury'. With a seamless flowing floor plan, complete with a separate living area, the use of space will continually inspire the way you live. The generous family and dining space draws family and guests to the light-filled heart of the home and out to the connected large alfresco. The rear of the home is dedicated to social areas taking in the stunning gourmet kitchen complete with walk-in pantry. The master suite creates a sanctuary with a generous walk-in robe and functional ensuite. Your teenagers will love their dedicated private wing with a study nook off the main living area. Three bedrooms, a children's activity room and a large family bathroom gives them plenty of space for alone time or to spend with friends.

Bedrooms	4
Bathrooms	2
Car Garage	2

Total m <sup>2</sup>	262.06
Total sqs	28.21
Width (m)	12.75
Length (m)	24.93

# 262

[hunterhomesnsw.com](http://hunterhomesnsw.com)



Floor plan not drawn to scale

