

HUNTER HOMES

live
WITH HEART ♥

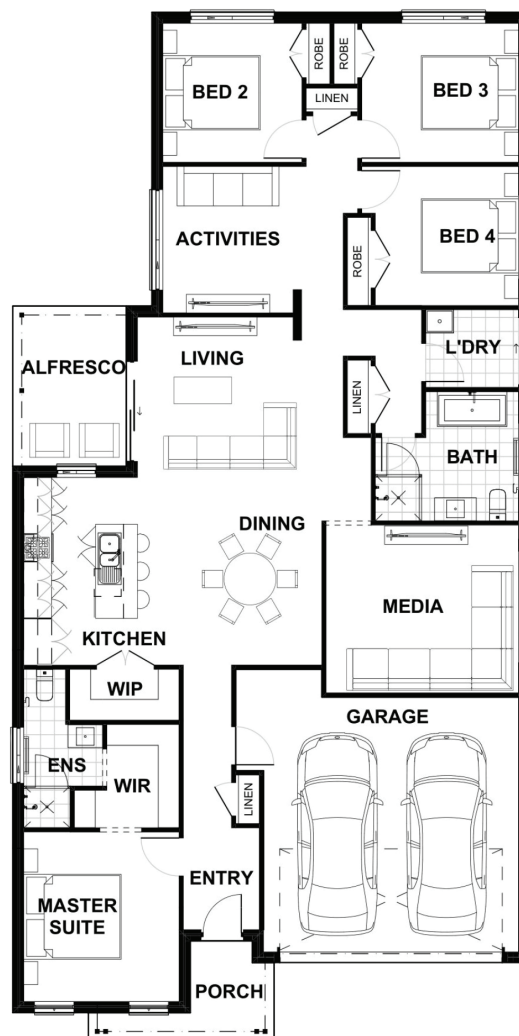
WISEMAN FACADE



Total (sq.s.)	23.48	Width (m)	11.15
Total (m²)	218.16	Length (m)	22.19

Description

The Ellerton 217 offers various living options with a media and children's activity room including plenty of additional storage. This home creates a unique living experience with plenty of scope for multi-functional use. A well-appointed gourmet kitchen overlooks the spacious dining and living zones, which flow generously to the airy alfresco. The master suite, complete with luxury ensuite and walk-through robe, is located at the front of the home. The three remaining bedrooms are located at the rear. This is a home that will allow your family to grow in comfortably. Whether you are looking for functionality, privacy or more living space, the Ellerton has got you covered.



Terms and Conditions: Images shown on this brochure are approximate and for illustration purposes only, these plans may not be drawn to scale. Façades and other images on this brochure may be shown as optional upgrades or not included, additional fixtures and finishes that are featured on this document may not be included in the base cost such as landscaping, tiling, decking, furniture, feature lighting, pools, driveways etc. Hunter Homes reserves the right to change plans and inclusions at any time. All designs that are developed remain the property of Hunter Homes Pty Ltd under copyright law & we retain & claim all rights to these plans. Changing plans by 50% or more does not avoid legal responsibility for a copyright breach.

1300 BUY HOME

See our website for Display locations
www.hunterhomesnsw.com

love YOUR
HUNTER HOME

Ellerton 217