

THE ALBION

Clifton Facade

HUNTER
HOMES



283

THE ALBION

Clifton Facade

Description

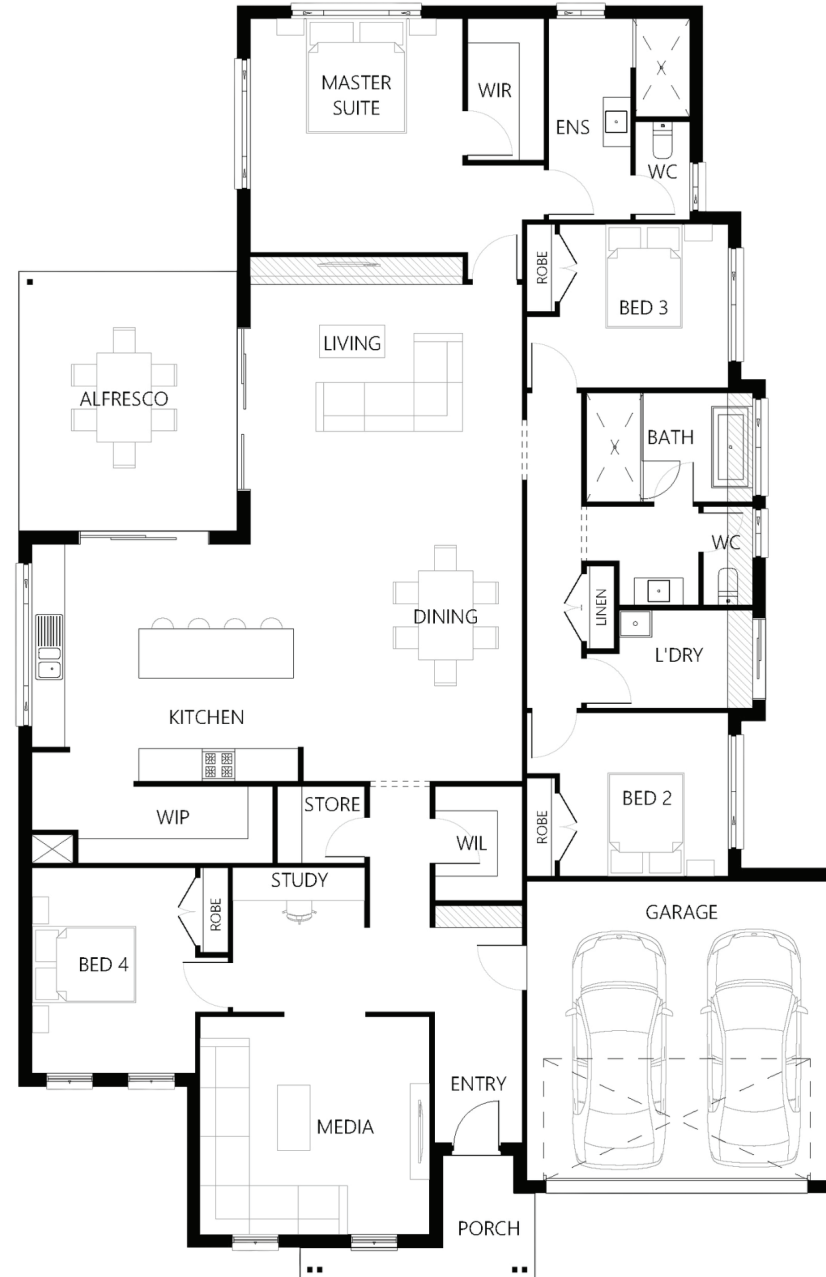
The Albion 283 is a spacious multi-functional four-bedroom family home with a combination of dedicated areas and open shared spaces. Parents will love the resort-style master suite located at the rear of the home complete with a large walk in robe, ensuite and views over the back garden. The remaining three bedrooms are enhanced by a generous study nook, as well as easy access to the large family bathroom and media room. The heart of the home is central, where the gourmet kitchen, living and dining blend to create a large, light-filled area flowing effortlessly to the alfresco.

| | |
|------------|---|
| Bedrooms | 4 |
| Bathrooms | 2 |
| Car Garage | 2 |

| | |
|----------------------|--------|
| Total m ² | 283.46 |
| Total sqs | 30.51 |
| Width (m) | 15.07 |
| Length (m) | 23.41 |

283

hunterhomesnsw.com



Floor plan not drawn to scale

