

# THE LOVEDALE

*Tuscany Facade*

HUNTER  
HOMES



214

# THE LOVEDALE

Tuscany Facade

## Description

The Lovedale 214 is the ultimate four bedroom family home. From the expansive open plan living area to the cleverly located bedrooms, every part of this home says comfort. With a seamless flowing floor plan, the use of space will continually inspire the way you live. The generous living, dining and kitchen space draws family and guests to the light-filled heart of the home which connects to the alfresco area. The master suite creates a sanctuary with a walk-in robe and ensuite located at the front of the home for privacy. With three bedrooms, a children's activity room and a large family bathroom this home provides plenty of space for the growing family.

---

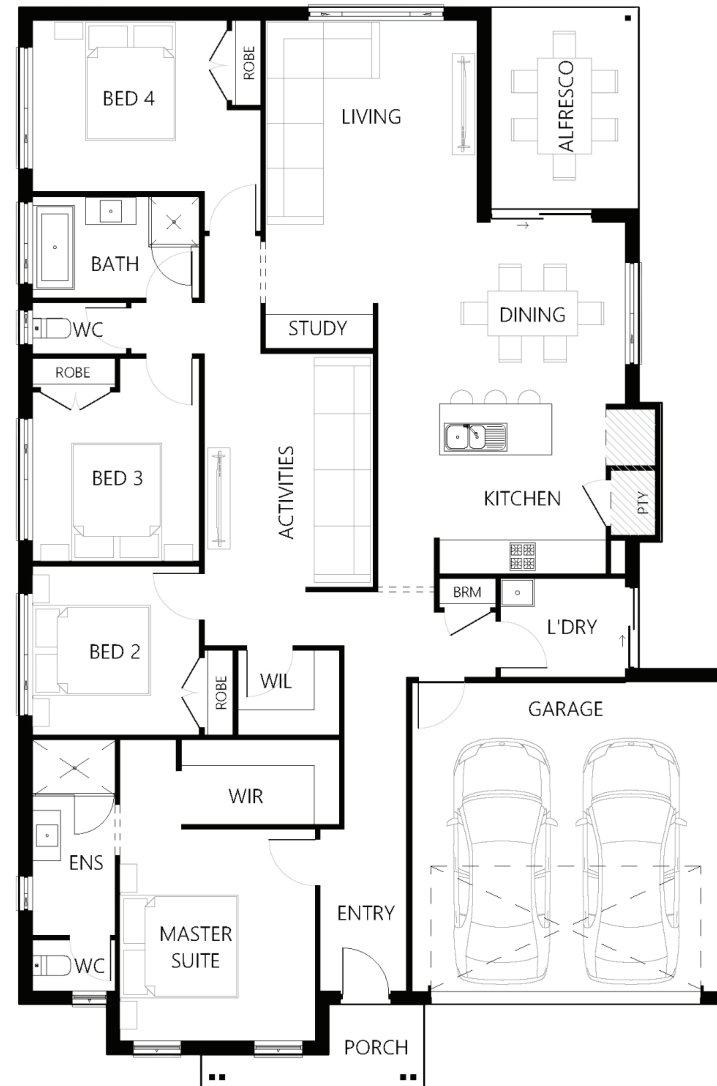
<b>Bedrooms</b>	4
<b>Bathrooms</b>	2
<b>Car Garage</b>	2

---

<b>Total m<sup>2</sup></b>	214.09
<b>Total sqs</b>	23.05
<b>Width (m)</b>	12.72
<b>Length (m)</b>	19.22

# 214

[hunterhomesnsw.com](http://hunterhomesnsw.com)



Floor plan not drawn to scale

