

HUNTER HOMES

live WITH HEART 



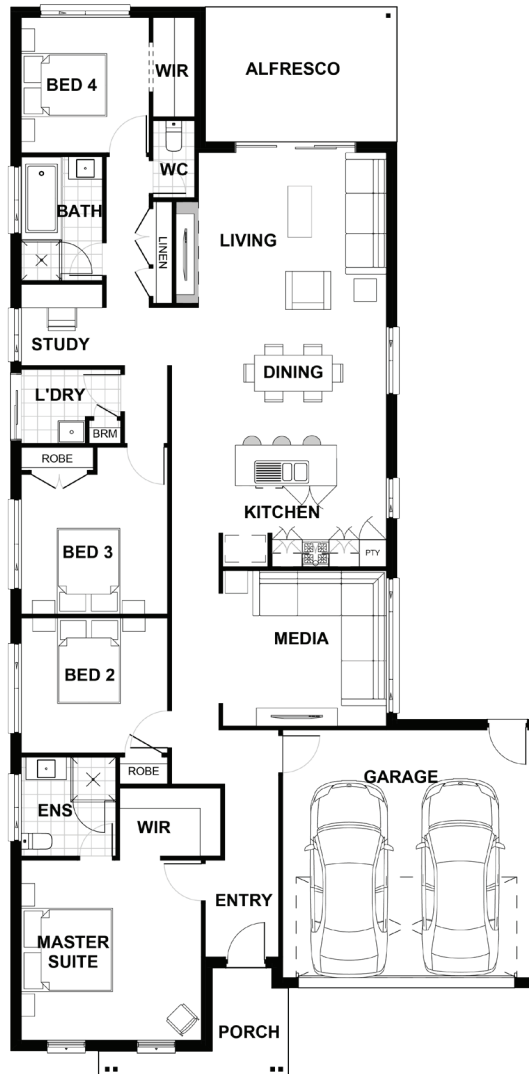
BOWMAN FACADE



Total (sq.s.)	23.42	Width (m)	11.79
Total (m ²)	217.54	Length (m)	23.8

Description

Designed for narrow lots the Rouchel 217 is a great home for the new homeowner and or an empty nester looking to downsize. The master suite is located at the front of the home with a walk in robe and ensuite. The other three remaining bedrooms are located on the same side as the master along with a functional family bathroom. The home has a media room and study with a kitchen overlooking the dining/living area which is connected to the alfresco.



Terms and Conditions: Images shown on this brochure are approximate and for illustration purposes only, these plans may not be drawn to scale. Façades and other images on this brochure may be shown as optional upgrades or not included, additional fixtures and finishes that are featured on this document may not be included in the base cost such as landscaping, tiling, decking, furniture, feature lighting, pools, driveways etc. Hunter Homes reserves the right to change plans and inclusions at any time. All designs that are developed remain the property of Hunter Homes Pty Ltd under copyright law & we retain & claim all rights to these plans. Changing plans by 50% or more does not avoid legal responsibility for a copyright breach.

1300 BUY HOME

See our website for Display locations
www.hunterhomesnsw.com

love YOUR HUNTER HOME

Rouchel 217