

THE ELLERTON

Wiseman Facade

HUNTER
HOMES



193

THE ELLERTON

Wiseman Facade

Description

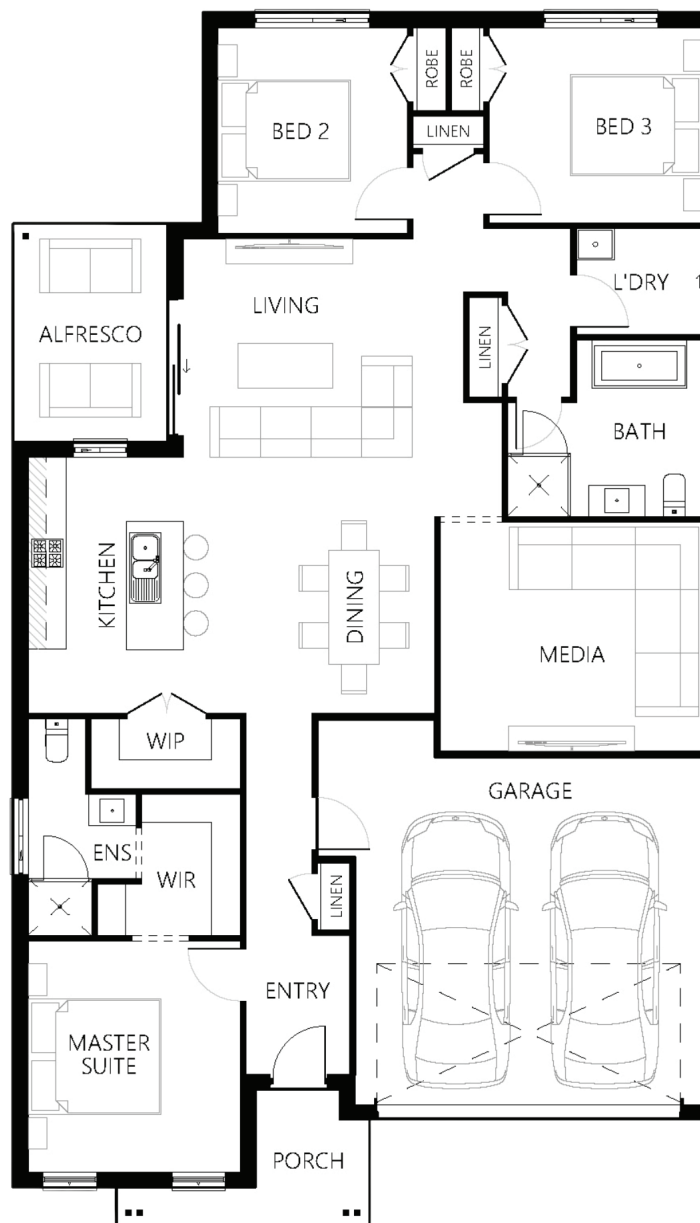
The Ellerton 193 offers a variety of living options and ample storage space with a media and living room. It offers a distinctive living experience that is suitable for multi-functional use. The well-equipped gourmet kitchen overlooks the capacious dining and living areas, which extend generously to the open and breezy alfresco. The luxurious master suite, featuring a walk-through robe and deluxe ensuite, is situated at the front of the house, while the other two bedrooms are at the back. With its functional design, privacy, and expansive living areas, the Ellerton is an ideal home for a growing family.

Bedrooms	3
Bathrooms	2
Car Garage	2

Total m²	192.49
Total sqs	20.72
Width (m)	11.15
Length (m)	19.19

193

hunterhomesnsw.com



Floor plan not drawn to scale

