

HUNTER HOMES

live WITH HEART 



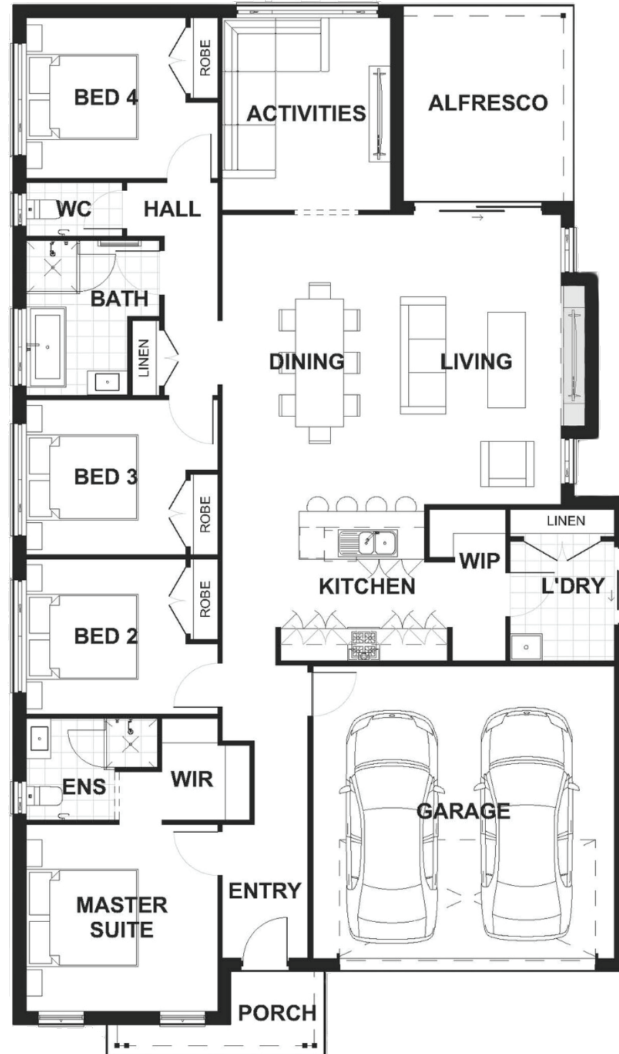
BOWMAN FACADE



Total (sq.s.)	22.61	Width (m)	11.57
Total (m ²)	210.03	Length (m)	19.72

Description

The Manton 210 is a great design which utilises space well. All four bedrooms are located to one side of the home with the master suite situated at the front with a generous walk in robe and ensuite. The open plan living area is adjacent to the galley style kitchen with a walk in pantry and access to the laundry. This open plan area is also connected to the media room and alfresco making this a great space to enjoy family time together or entertain guests away from the privacy of the bedrooms.



Terms and Conditions: Images shown on this brochure are approximate and for illustration purposes only, these plans may not be drawn to scale. Façades and other images on this brochure may be shown as optional upgrades or not included, additional fixtures and finishes that are featured on this document may not be included in the base cost such as landscaping, tiling, decking, furniture, feature lighting, pools, driveways etc. Hunter Homes reserves the right to change plans and inclusions at any time. All designs that are developed remain the property of Hunter Homes Pty Ltd under copyright law & we retain & claim all rights to these plans. Changing plans by 50% or more does not avoid legal responsibility for a copyright breach.

1300 BUY HOME

See our website for Display locations
www.hunterhomesnsw.com

love YOUR HUNTER HOME

Manton 210