

HUNTER HOMES

live WITH HEART 



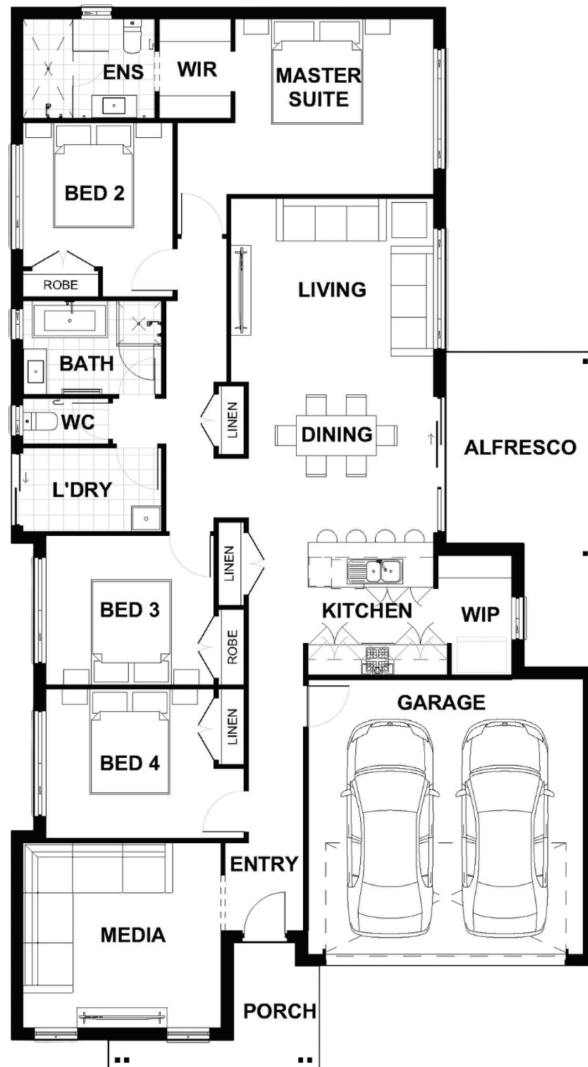
PEARSON FACADE



Total (sq.s.)	22.41	Width (m)	11.67
Total (m ²)	208.23	Length (m)	21.25

Description

The Ashford 208 combines comfortable family living and effortless style. The family will love coming together for a meal in the open-plan living space, where the kitchen connects seamlessly with the living and dining areas. The flow to the alfresco extends the space and enhances this home with an effortless indoor-outdoor lifestyle. Located at the rear, the sanctuary of the master suite includes a walk-in robe and ensuite, giving parents a sense of privacy and retreat from the rest of the home. The remaining bedrooms give families endless opportunities in terms of space with multi-functional living options.



Terms and Conditions: Images shown on this brochure are approximate and for illustration purposes only, these plans may not be drawn to scale. Façades and other images on this brochure may be shown as optional upgrades or not included, additional fixtures and finishes that are featured on this document may not be included in the base cost such as landscaping, tiling, decking, furniture, feature lighting, pools, driveways etc. Hunter Homes reserves the right to change plans and inclusions at any time. All designs that are developed remain the property of Hunter Homes Pty Ltd under copyright law & we retain & claim all rights to these plans. Changing plans by 50% or more does not avoid legal responsibility for a copyright breach.

1300 BUY HOME

See our website for Display locations
www.hunterhomesnsw.com

love YOUR HUNTER HOME

Ashford 208