

# HUNTER HOMES

live WITH HEART 



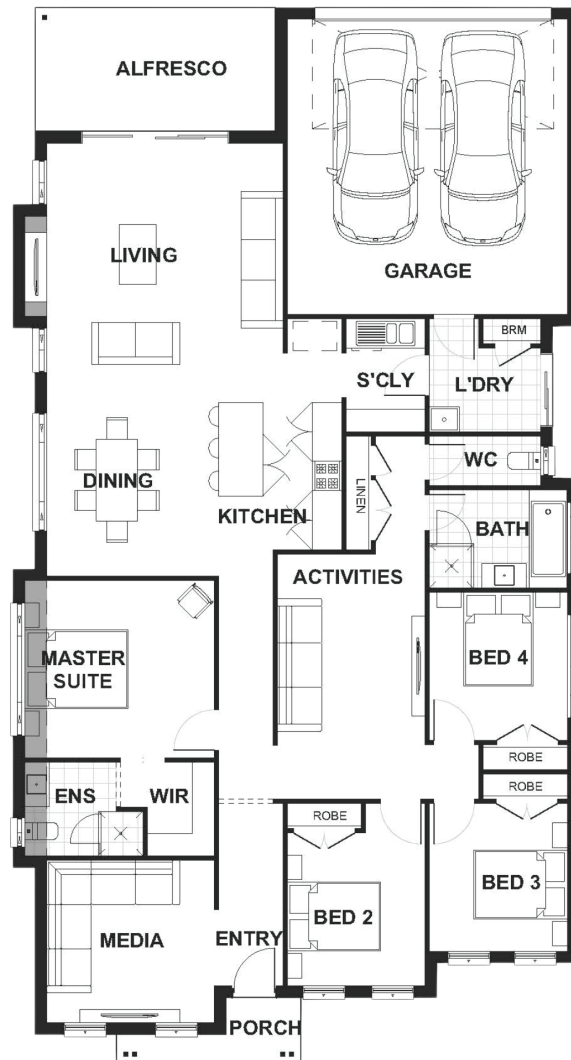
## SAINT CLAIR FACADE



Total (sq.s.)	24.63	Width (m)	11.5
Total (m <sup>2</sup> )	228.8	Length (m)	21.47

### Description

Created for a narrow lot, the Alleyway 228 will surprise you. This single level home is all about flow by maximising space and lifestyle living. Arriving home via the double garage located at the rear of the block ideally positions you to enter directly into the heart of the home. Perfect for entertaining, the light-filled home features a scullery style kitchen overlooking the open plan living and dining areas. You will enjoy retreating to the master suite with walk-in robe and ensuite or sneaking into the media room to catch up on your favorite shows. Featuring a children's hub combining three bedrooms, activity room and family size bathroom at the center of the home.



**Terms and Conditions:** Images shown on this brochure are approximate and for illustration purposes only, these plans may not be drawn to scale. Façades and other images on this brochure may be shown as optional upgrades or not included, additional fixtures and finishes that are featured on this document may not be included in the base cost such as landscaping, tiling, decking, furniture, feature lighting, pools, driveways etc. Hunter Homes reserves the right to change plans and inclusions at any time. All designs that are developed remain the property of Hunter Homes Pty Ltd under copyright law & we retain & claim all rights to these plans. Changing plans by 50% or more does not avoid legal responsibility for a copyright breach.

Alleyway 228

1300 BUY HOME

See our website for Display locations  
[www.hunterhomesnsw.com](http://www.hunterhomesnsw.com)

love YOUR HUNTER HOME