

# HUNTER HOMES

live WITH HEART 



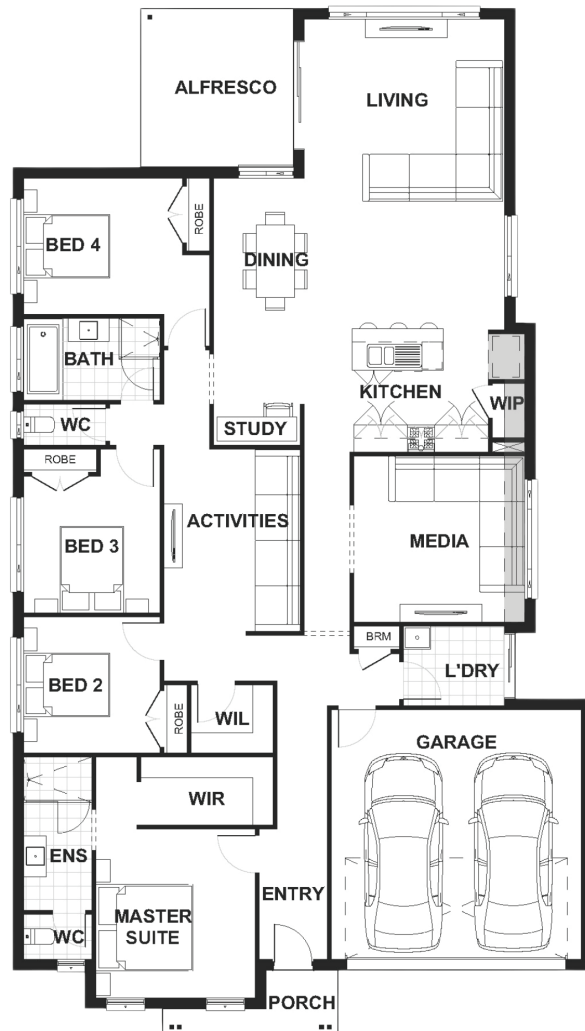
## TUSCANY FACADE



Total (sq.s.)	26.33	Width (m)	12.63
Total (m <sup>2</sup> )	244.56	Length (m)	22.63

### Description

The Lovedale 245 is the ultimate four bedroom family home you have been searching for. From the expansive living area to the cleverly located bedrooms, every part of this home says comfort and style. With a seamless flowing floor plan complete, the use of space will continually inspire the way you live. The generous family/living, dining and open plan kitchen draws family and guests to the light-filled heart of the home and out to the connected alfresco. Separate to the open plan living areas is a media room which is ideal for movie nights in. The master suite creates a sanctuary with a walk-in robe and spacious ensuite located at the front of the home for privacy. Your teenagers will love their dedicated wing located off the main living space. With three bedrooms centrally located to a children's activity room and a large family bathroom, this home provides plenty of space for the growing family.



**Terms and Conditions:** Images shown on this brochure are approximate and for illustration purposes only, these plans may not be drawn to scale. Façades and other images on this brochure may be shown as optional upgrades or not included, additional fixtures and finishes that are featured on this document may not be included in the base cost such as landscaping, tiling, decking, furniture, feature lighting, pools, driveways etc. Hunter Homes reserves the right to change plans and inclusions at any time. All designs that are developed remain the property of Hunter Homes Pty Ltd under copyright law & we retain & claim all rights to these plans. Changing plans by 50% or more does not avoid legal responsibility for a copyright breach.

1300 BUY HOME

See our website for Display locations  
[www.hunterhomesnsw.com](http://www.hunterhomesnsw.com)

love YOUR HUNTER HOME

Lovedale 245