

# THE NEWPORT

*Wellington Facade*

HUNTER  
HOMES



220

# THE NEWPORT

Wellington Facade

## Description

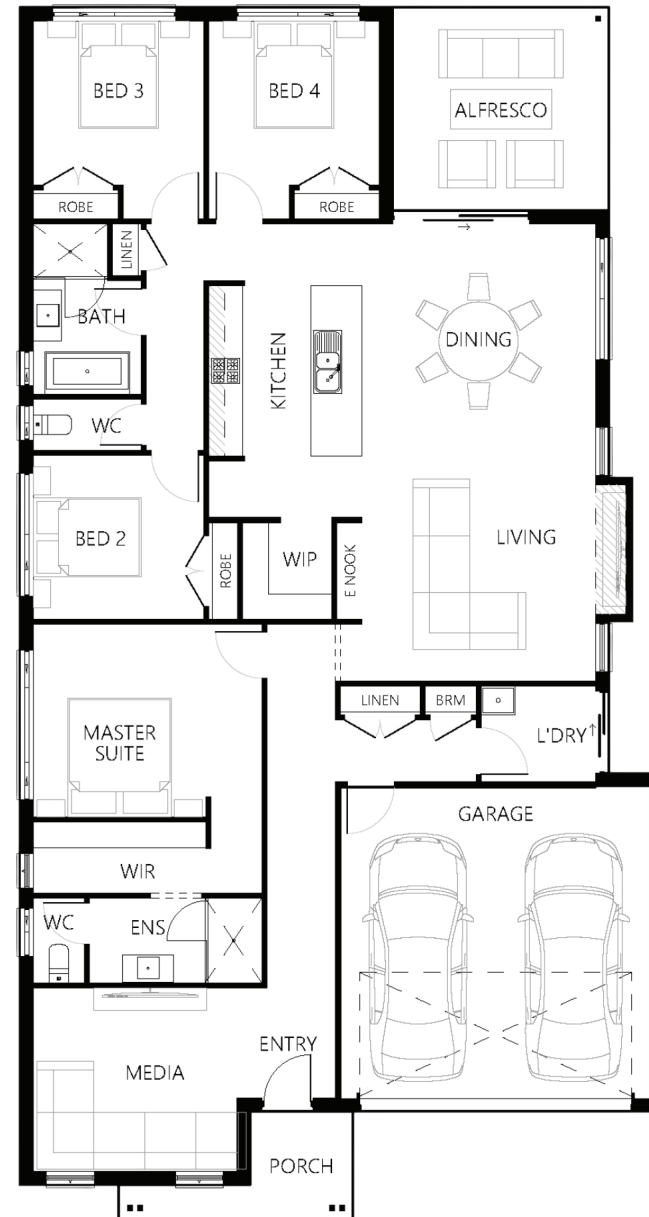
The Newport 220 combines open plan living with ideal sleeping zones! Upon entering the home a media room awaits which can be converted to a second living area, study or entertainment hub. The master suite is located off the main hallway complete with a walk in robe and ensuite. The remaining three bedrooms are situated off the open plan living area at the rear of the home with a generous family bathroom. A stylish galley style kitchen with an island bench that overlooks the living and dining area which connects to a great sized alfresco. This home is practical living at its best.

Bedrooms	4
Bathrooms	2
Car Garage	2

Total m <sup>2</sup>	220.09
Total sqs	23.69
Width (m)	11.4
Length (m)	21.4

# 220

[hunterhomesnsw.com](http://hunterhomesnsw.com)



Floor plan not drawn to scale

