

# HUNTER HOMES

live WITH HEART 



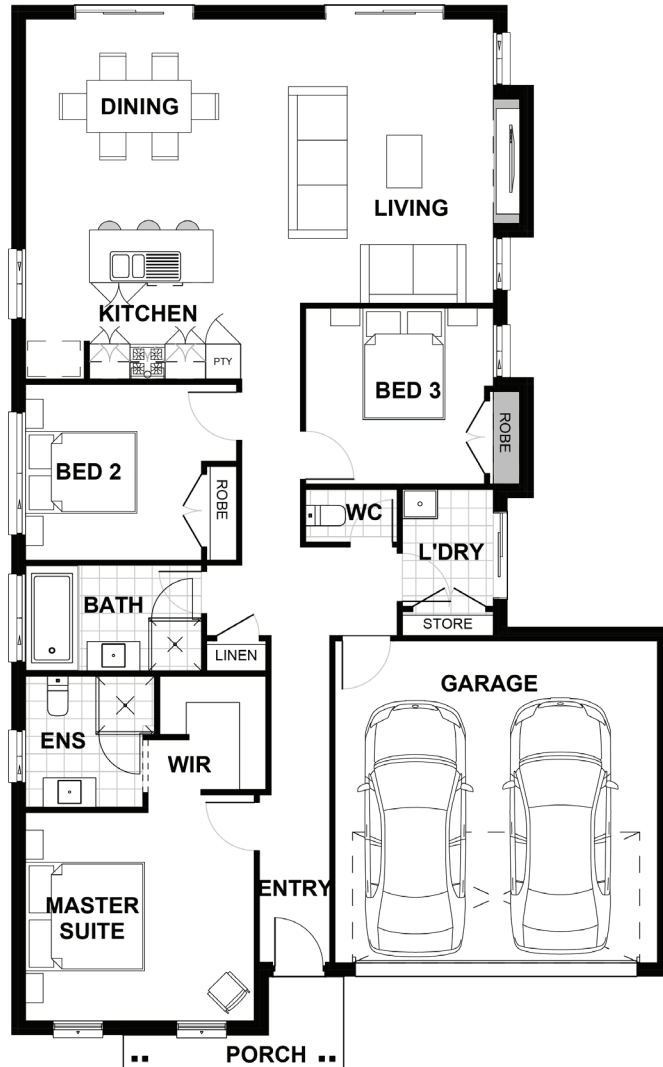
## QUARTZ FACADE



Total (sq.s.)	17.98	Width (m)	11.26
Total (m <sup>2</sup> )	166.99	Length (m)	18.19

### Description

The Tulloch 167 will surprise you with what is achievable within a compact three bedroom home. This single level design is all about flow, maximising space and lifestyle. The light-filled spaces are perfect for entertaining all year round with a large galley-style kitchen and open plan living with easy access to enjoy the outdoors. You will enjoy retreating to the master suite with a walk in robe and ensuite for that peaceful night's rest.



**Terms and Conditions:** Images shown on this brochure are approximate and for illustration purposes only, these plans may not be drawn to scale. Façades and other images on this brochure may be shown as optional upgrades or not included, additional fixtures and finishes that are featured on this document may not be included in the base cost such as landscaping, tiling, decking, furniture, feature lighting, pools, driveways etc. Hunter Homes reserves the right to change plans and inclusions at any time. All designs that are developed remain the property of Hunter Homes Pty Ltd under copyright law & we retain & claim all rights to these plans. Changing plans by 50% or more does not avoid legal responsibility for a copyright breach.

1300 BUY HOME

See our website for Display locations  
[www.hunterhomesnsw.com](http://www.hunterhomesnsw.com)

love YOUR HUNTER HOME

Tulloch 167