

THE WALLIS

Glendon Facade

HUNTER
HOMES



181

THE WALLIS

Glendon Facade

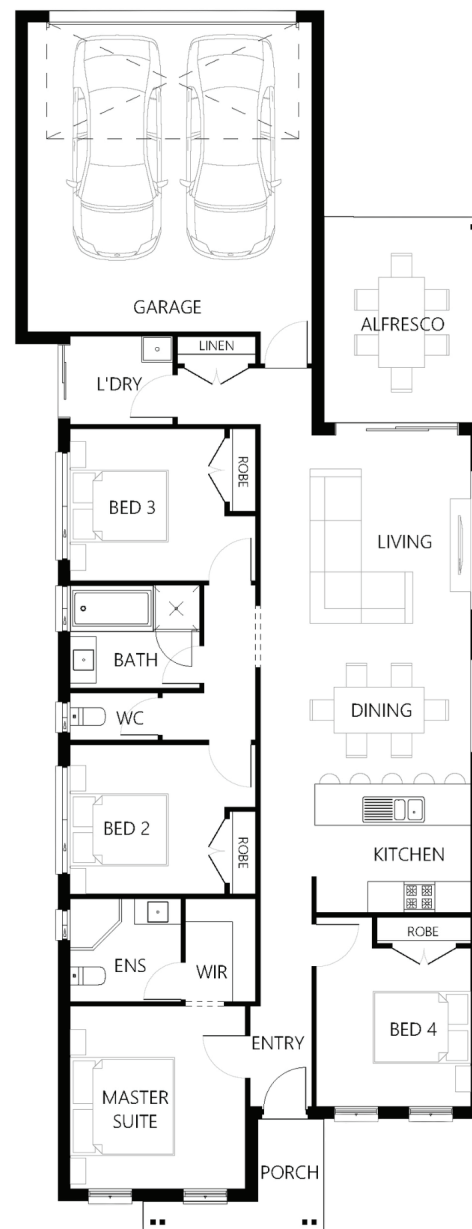
Description

A dream for first home buyers, the Wallis 181 gives you everything you need as a four bedroom design without breaking the budget. This design is suited for rear lane access. The generous master suite, with its stylish ensuite and functional walk in robe are located at the front of the home. With the three remaining bedrooms located off the extensive hallway and a spacious family bathroom this house has great potential. The open plan kitchen, dining and living area feels like the heart of the home. Just open the doors to the alfresco, bring the outside in and enjoy!

Bedrooms	4
Bathrooms	2
Car Garage	2
<hr/>	
Total m ²	181.29
Total sqs	19.51
Width (m)	9.09
Length (m)	23.74

181

hunterhomesnsw.com



Floor plan not drawn to scale

