

THE OPULENCE

Windsor Facade

HUNTER
HOMES



286

THE OPULENCE

Windsor Facade

Description

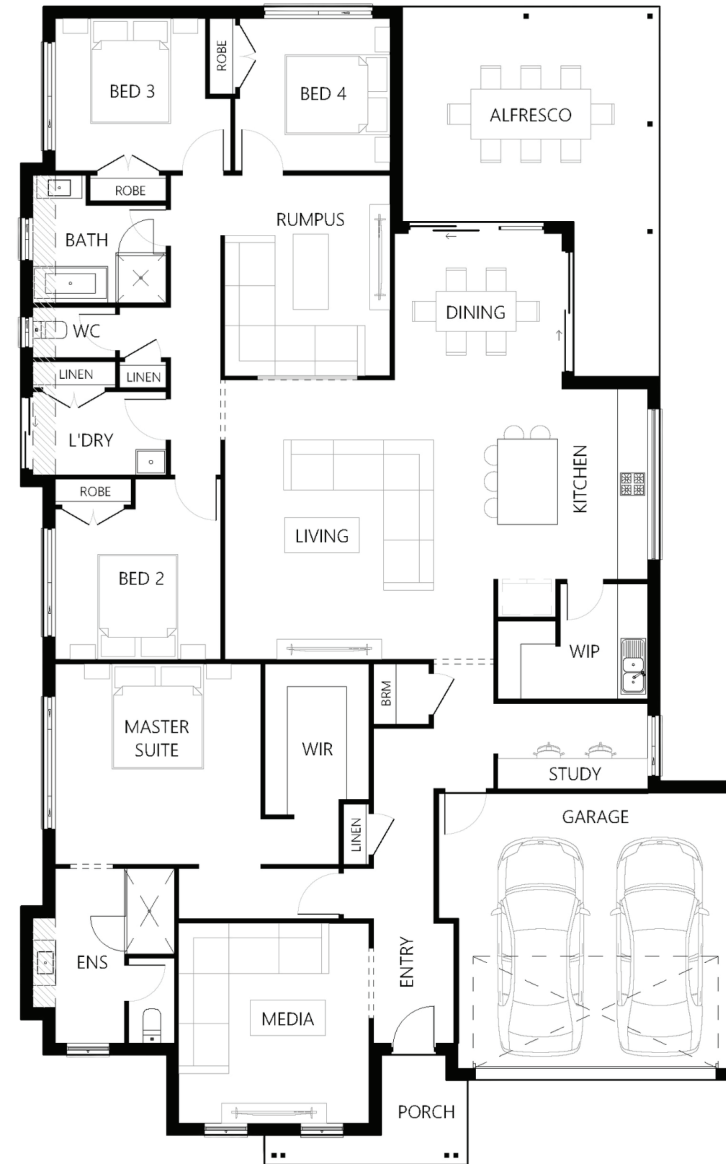
On entering the Opulence 286, you will be immediately captivated by its free-flowing design, epitomising the ultimate in modern living. Complete with all of life's necessities and luxuries, this generous four-bedroom home is well-proportioned and ticks all the boxes. With multiple living areas, including a media room, children's activity room and a home study every aspect of this home has been thoughtfully designed to make optimum use of space. The dining area flows seamlessly to the alfresco which is ideal for entertaining. The generous master suite is located off its own private hallway which features a walk-in robe and opulent ensuite. Space, luxury and functionality are the hallmarks of this beautiful home.

Bedrooms	4
Bathrooms	2
Car Garage	2

Total m ²	286.02
Total sqs	30.79
Width (m)	14.48
Length (m)	23.15

286

hunterhomesnsw.com



Floor plan not drawn to scale

