

THE JOHNSON

Georgian Facade

HUNTER
HOMES



248

THE JOHNSON

Georgian Facade

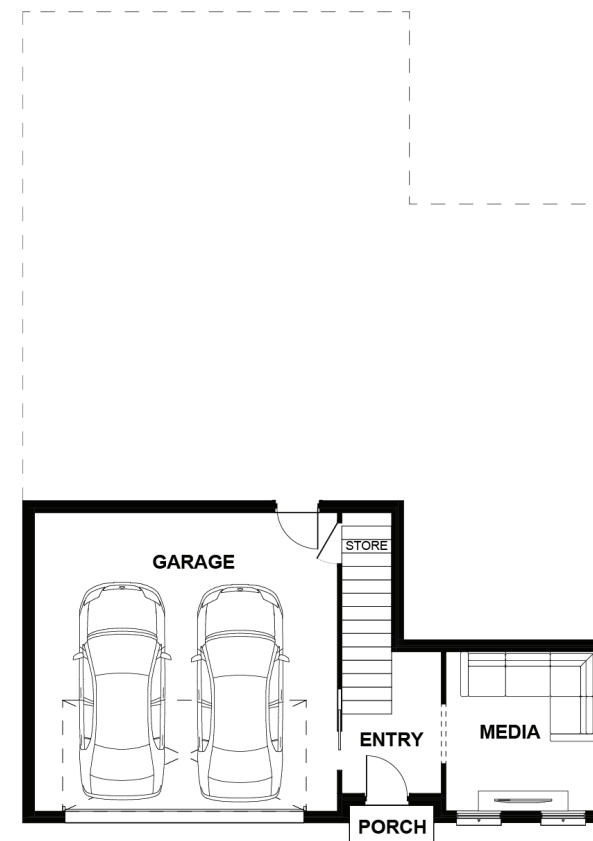
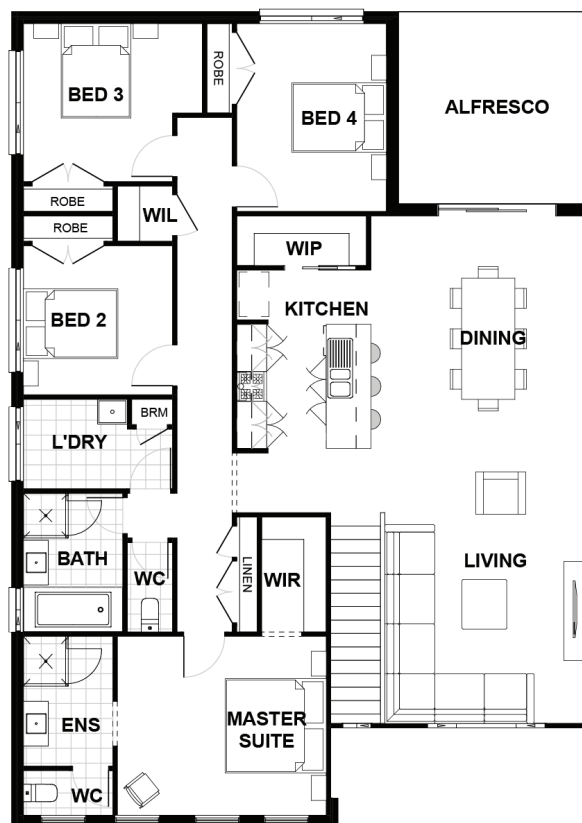
Description

The split-level design of the Johnson 247 offers a remarkable street presence with perfect practicality. Designed to work with the upwards slope of your land, this is a home that you will fall in love with. The master suite, featuring a large walk in robe and spacious ensuite, is located to the front of the home, with three additional bedrooms grouped together to the rear. Featuring open plan living in generous proportions, this home includes a gourmet kitchen with a walk-in pantry. Located off the dining room opposite the kitchen you will have direct access to a spacious alfresco making this home ideal for entertaining guests. Downstairs you will find a private living room which has the option to convert to a rumpus allowing both privacy and room to grow.

Bedrooms	4
Bathrooms	2
Car Garage	2
<hr/>	
Total m ²	247.73
Total sqs	26.67
Width (m)	11.75
Length (m)	16.41

248

hunterhomesnsw.com



Floor plan not drawn to scale

