

THE HILLTON

Bolton Facade

HUNTER
HOMES



268

THE HILLTON

Bolton Facade

Description

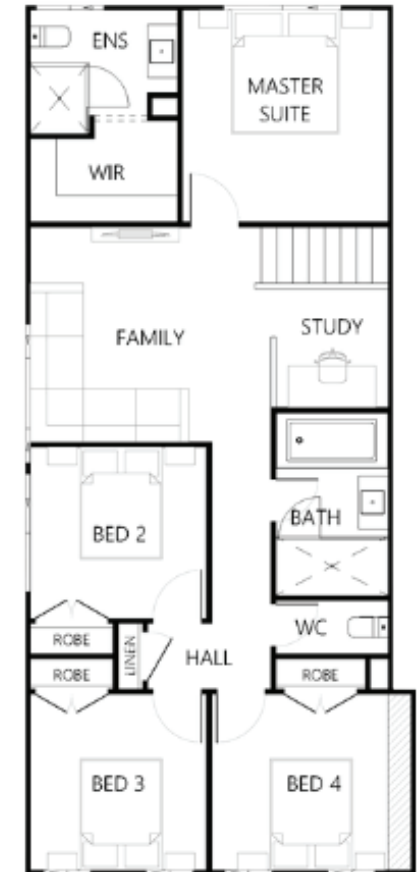
The Hilton 268 has all the features within a split home that you will need. This home is a side split design with four living areas which include a media room, activities and rumpus. The open plan living/dining area is spacious in size with a stylish galley style kitchen. An alfresco area completes this level with access from the rumpus room. The first floor has four bedrooms, two bathrooms and a study nook. The master suite is located towards the rear of the home with a walk-through robe to the ensuite. The remaining three bedrooms are situated at the front of the home together.

Bedrooms	4
Bathrooms	2
Car Garage	2

Total m ²	268.04
Total sqs	28.85
Width (m)	12.61
Length (m)	15.12

268

hunterhomesnsw.com



Floor plan not drawn to scale

