

# THE HEYFIELD

*Pearson Facade*

HUNTER  
HOMES



222

# THE HEYFIELD

Pearson Facade

## Description

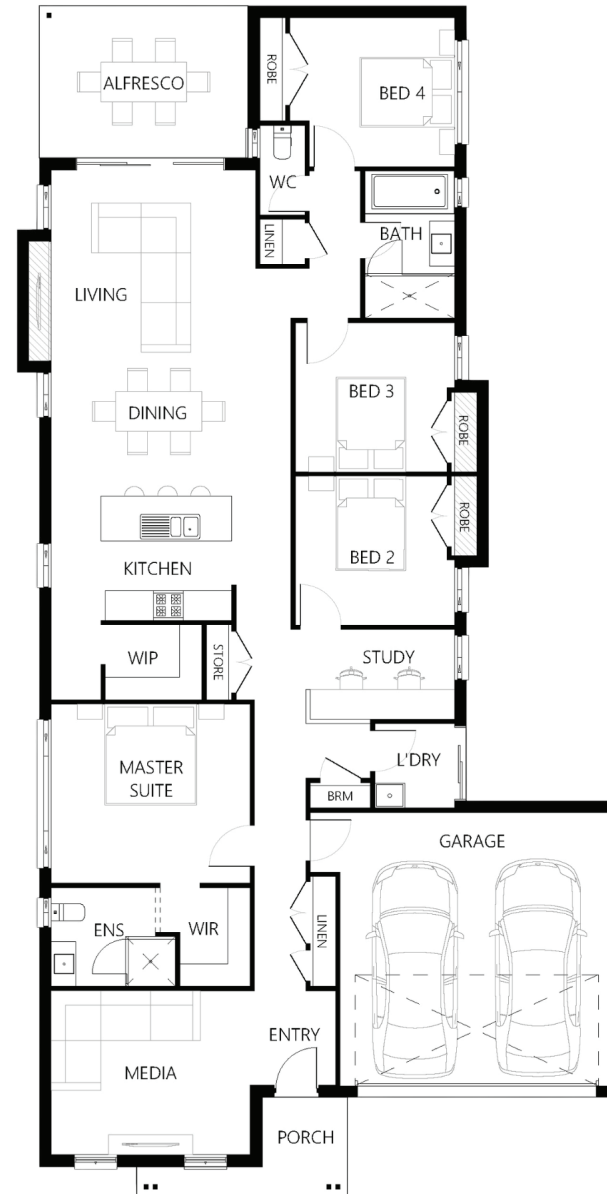
With an easy and fluid transition between interior and exterior spaces, the Heyfield 222's open-plan design and stunning alfresco is perfect for contemporary living. Suited for narrow sites, this beautiful home maximises storage space with a walk-in pantry, built in robes and a versatile study space. As your family grows, so will your needs which makes this the ideal family home in terms of design and layout. Options like adapting the comfortable home theatre and spacious double garage into additional living and accommodation areas are always there for you as the years go by. Featuring four bedrooms, including an impressive mid master suite with ensuite, the Heyfield 222 ticks all the boxes for the budget-conscious homeowner.

Bedrooms	4
Bathrooms	2
Car Garage	2

Total m <sup>2</sup>	222.04
Total sqs	23.9
Width (m)	12.24
Length (m)	23.97

# 222

[hunterhomesnsw.com](http://hunterhomesnsw.com)



Floor plan not drawn to scale

