

HUNTER HOMES

live WITH HEART 



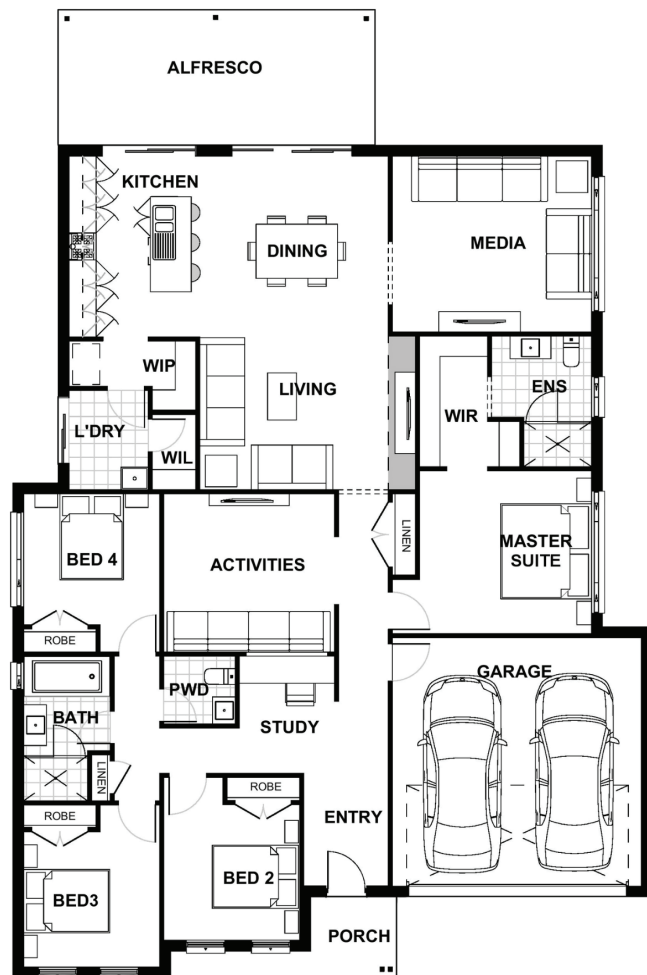
AVANTI FACADE



Total (sq.s.)	27.12	Width (m)	14.12
Total (m ²)	251.93	Length (m)	21.42

Description

The Rosewood 252 is a four bedroom, two bathroom home ideal for relaxing with family and friends, with dedicated zoned bedrooms and is full of little hidden charms. When you step into the home you will find a study with three bedrooms located off the main bathroom and a separate powder room for guests. The spacious kitchen includes a generous island bench and overlooks the dining room which all flows to the alfresco area. The versatile activities room located within the centre of the home gives kids all the room they need, while the separate media room offers a quiet sanctuary. Spacious bedrooms for the kids, and a deluxe master suite with walk through robe and private ensuite, the Rosewood 251 is everything you want and more.



Terms and Conditions: Images shown on this brochure are approximate and for illustration purposes only, these plans may not be drawn to scale. Façades and other images on this brochure may be shown as optional upgrades or not included, additional fixtures and finishes that are featured on this document may not be included in the base cost such as landscaping, tiling, decking, furniture, feature lighting, pools, driveways etc. Hunter Homes reserves the right to change plans and inclusions at any time. All designs that are developed remain the property of Hunter Homes Pty Ltd under copyright law & we retain & claim all rights to these plans. Changing plans by 50% or more does not avoid legal responsibility for a copyright breach.

1300 BUY HOME

See our website for Display locations
www.hunterhomesnsw.com

love YOUR HUNTER HOME

Rosewood 252