

THE MOORING

Maryvale Facade

HUNTER
HOMES



259

THE MOORING

Maryvale Facade

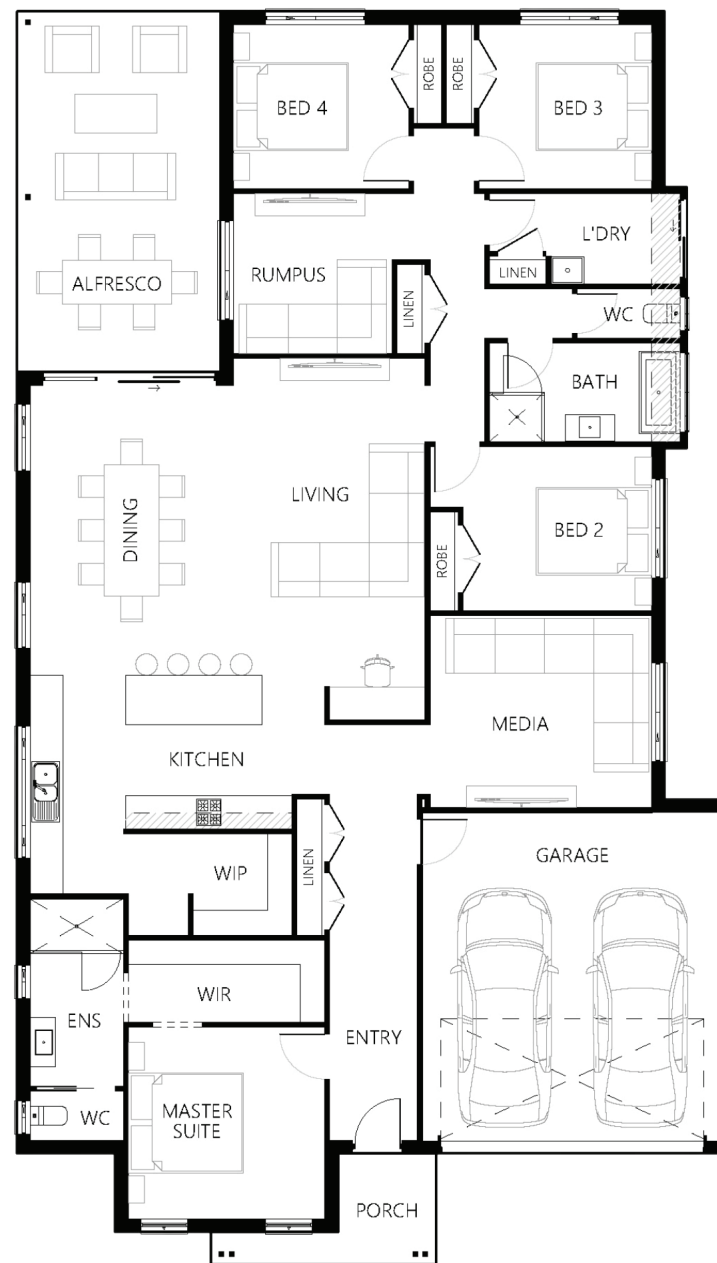
Description

The Mooring 259 combines all the essential elements of modern living to deliver a retreat in the comfort of your own home. The unique design unlocks endless possibility for your family's everyday lives with living spaces located in the center of the home, creating a true sense of rest and relaxation when it's time to find sanctuary in private spaces. The living and dining spaces along with the media room are all centrally located. The stunning gourmet kitchen, that features a generous island bench, is the ideal setting for everyday living. The grand master suite located at the front of the home creates the ultimate retreat-like vibe being separated from the rest of the home. Complete with a decadent ensuite and spacious walk-in robe, this lavish retreat is a well-earned reward at the end of the day. Kids will be equally ecstatic with their space. Three bedrooms and a large family bathroom provide a dedicated area for chilling and enjoying quiet time,

Bedrooms	4
Bathrooms	2
Car Garage	2
<hr/>	
Total m²	267.84
Total sqs	28.83
Width (m)	13.13
Length (m)	22.89

259

hunterhomesnsw.com



Floor plan not drawn to scale

