

THE ROCKLEIGH

Bowman Alt Facade

HUNTER
HOMES



308

THE ROCKLEIGH

Bowman Alt Facade

Description

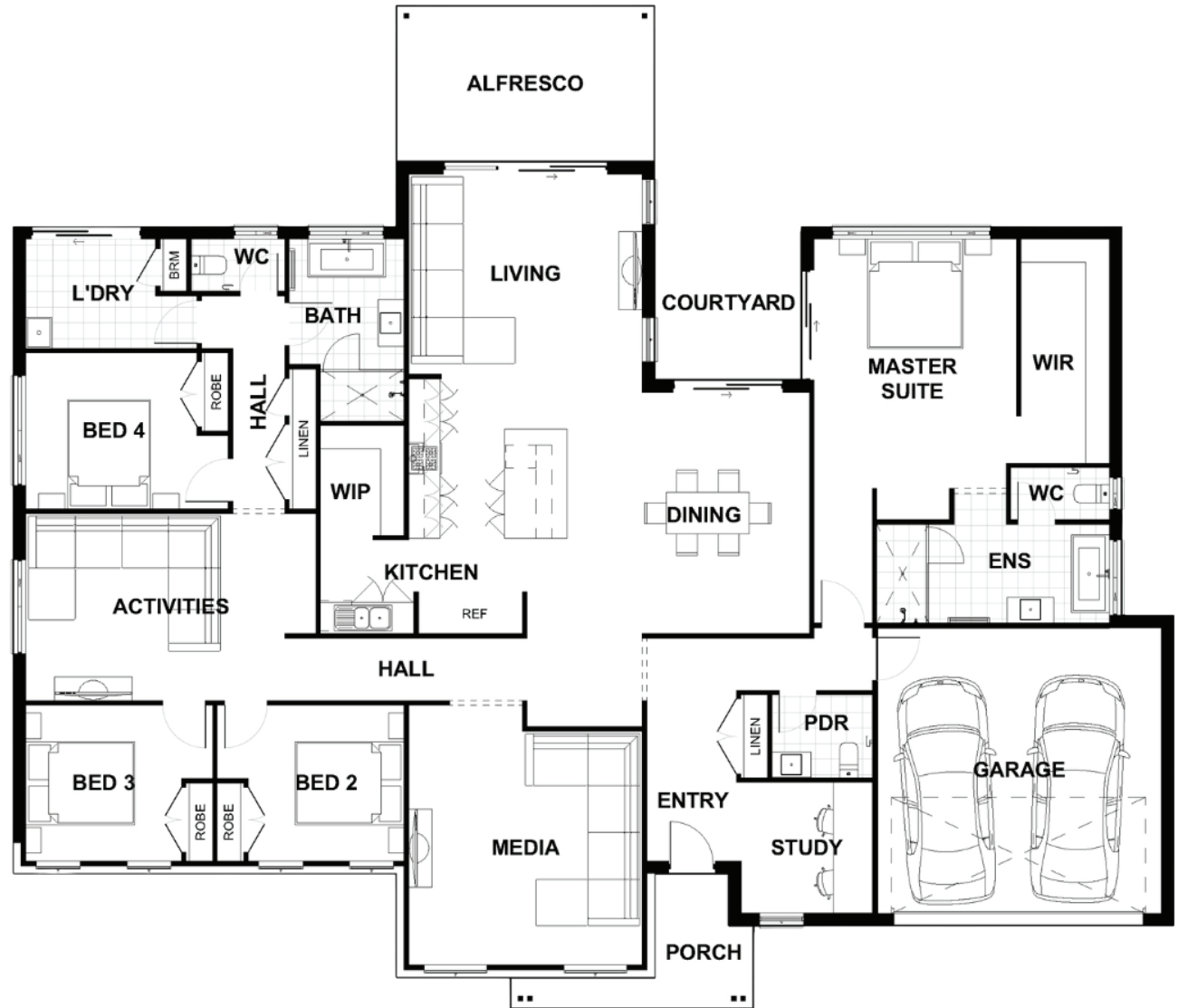
The Rockleigh 308 has something for everyone. This beautifully designed home offers multiple living quarters and areas of privacy. The master suite, with a hallway entrance, luxury ensuite and courtyard access, is nestled towards the rear of the home, providing a private sanctuary for parents. Three generous sized bedrooms, main bathroom and activities room are located on the opposite side of the home which allows enough space for kids to entertain friends. The designated study area is well suited to a home office, while the generous media room allows families to relax and enjoy movie nights together. The heart of this home is the enormous living, dining, and gourmet kitchen area, complete with walk in pantry and oversized island bench. The living area opens out to a large alfresco, providing the perfect area for entertaining friends and family.

Bedrooms	4
Bathrooms	2
Car Garage	2

Total m ²	308.21
Total sqs	33.18
Width (m)	22.36
Length (m)	19.3

308

hunterhomesnsw.com



Floor plan not drawn to scale

