

# THE TAHLEE

*Bowman Facade*

HUNTER  
HOMES



190

# THE TAHLEE

Bowman Facade

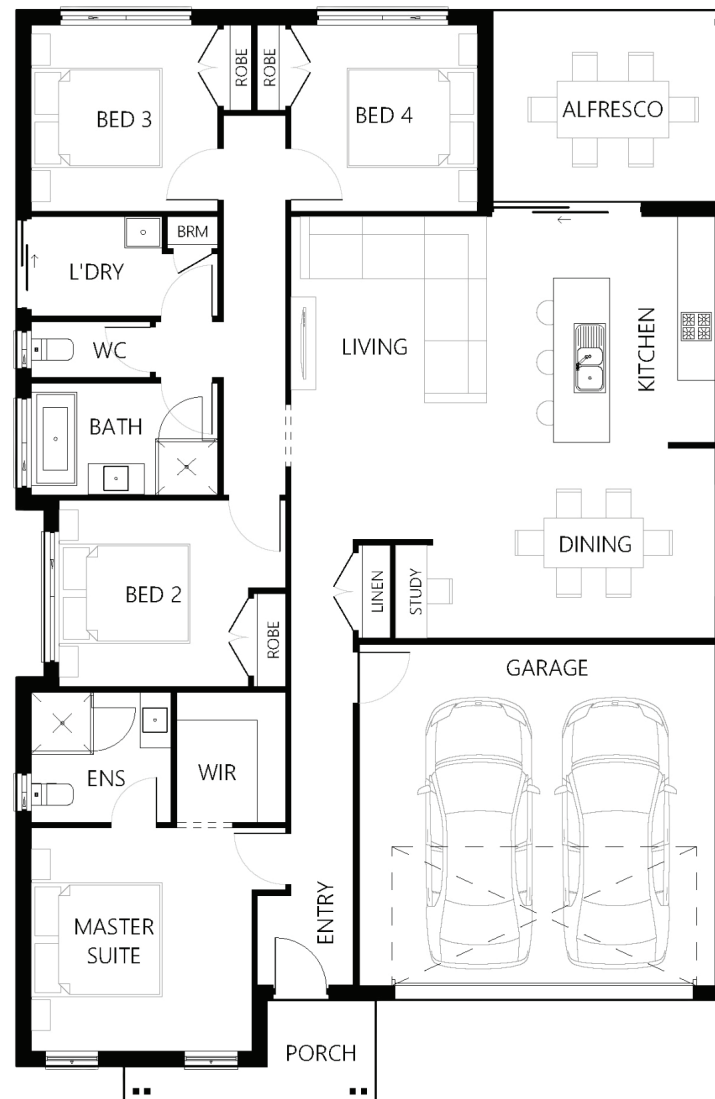
## Description

The Tahlee 190 has been cleverly designed to maximise space! The spacious master suite is situated at the front of the home with a large walk in robe and sizable ensuite. The remaining three bedrooms are located off the main living area and are tucked away to the side of the home surrounded by a large family bathroom. The open plan living has a substantial sized dining area with an integrated study. The stylish galley style kitchen with an island bench connects flawlessly to the alfresco area which is ideal for entertaining guests. The Tahlee 190 certainly maximises space and is the perfect hoe for a first home buyer and or investor alike.

Bedrooms	4
Bathrooms	2
Car Garage	2
<hr/>	
Total m²	190.57
Total sqs	20.51
Width (m)	11.49
Length (m)	17.62

# 190

[hunterhomesnsw.com](http://hunterhomesnsw.com)



Floor plan not drawn to scale

