

THE OAKDALE

Quartz Facade

HUNTER
HOMES



216

THE OAKDALE

Quartz Facade

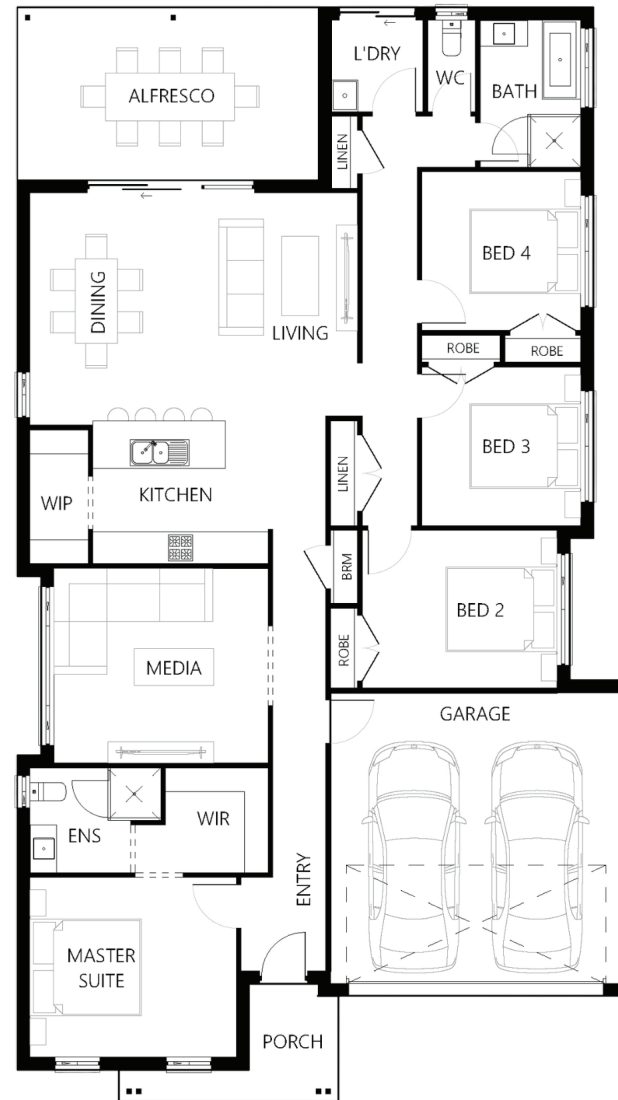
Description

Bringing you contemporary family living at its best, the Oakdale 216 combines practicality, space and comfort! This design works effortlessly as a family home where the open plan living area presides over the stunning gourmet kitchen, the family/living and dining area which opens up to the alfresco. A comfortable media room, centrally located, is a perfect addition as the entertainment hub. With four bedrooms and features including a walk-in pantry, great sized bathroom and laundry, along with plenty of linen space will ensure that there is enough room and storage for anyone. Sitting comfortably at the front of the home, the beautiful master suite offers a perfect sanctuary.

Bedrooms	4
Bathrooms	2
Car Garage	2
<hr/>	
Total m²	216.4
Total sqs	23.29
Width (m)	11.66
Length (m)	20.69

216

hunterhomesnsw.com



Floor plan not drawn to scale

