

# THE NEWPORT

*Wellington Facade*

HUNTER  
HOMES



202

# THE NEWPORT

Wellington Facade

## Description

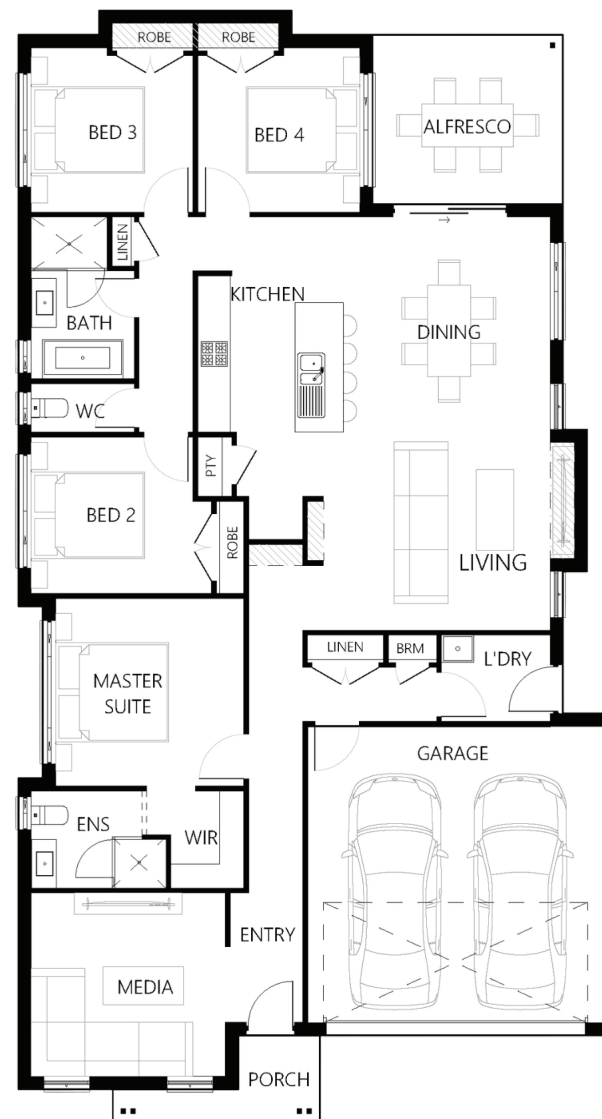
The Newport 202 combines open plan living with ideal sleeping zones! Upon entry to the home a media room awaits which can be converted to a second living area or entertainment hub. The master suite is located off the main hallway complete with a walk in robe and ensuite. The remaining three bedrooms and situated off the open plan living area at the rear of the home with a generous family bathroom. A stylish galley style kitchen with an island bench overlooks the living and dining area which connects to a great sized alfresco. This home is practical living at its best.

Bedrooms	4
Bathrooms	2
Car Garage	2

Total m²	202.52
Total sqs	21.8
Width (m)	11.1
Length (m)	20.6

# 202

hunterhomesnsw.com



Floor plan not drawn to scale

