

HUNTER HOMES

live WITH HEART 



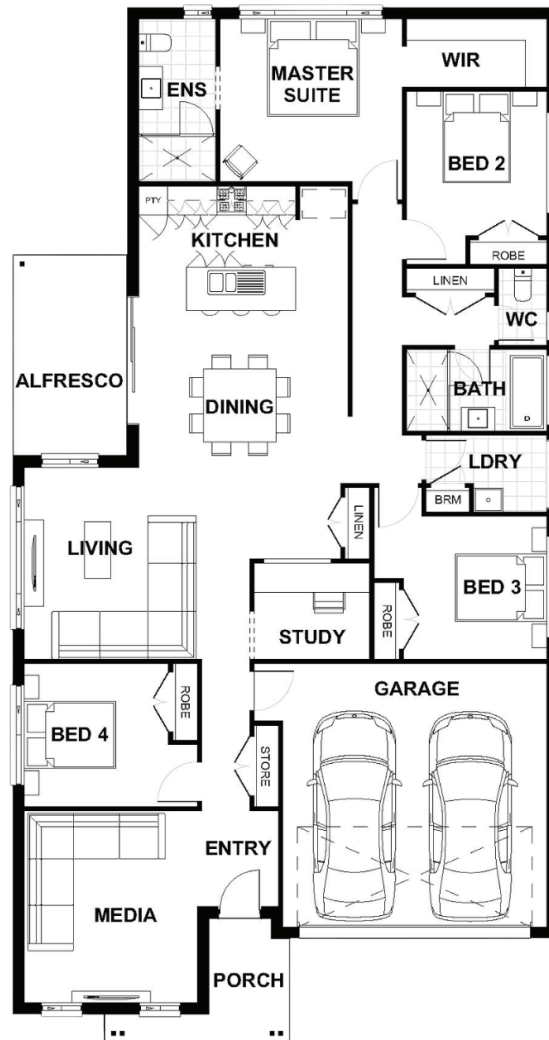
WISEMAN FACADE



Total (sq.s.)	23.67	Width (m)	11.36
Total (m ²)	219.86	Length (m)	21.6

Description

The Alpine 220 is a home that draws everyone together. The large open plan living and dining space joins seamlessly to the spacious alfresco. Perfect for entertaining friends, it is also a welcoming area for the family to spend time together. The media room creates an additional living space away from the hub of the home which has been cleverly located at the front of the house. The master suite is located at the rear of the home with a spacious walk in robe and cleverly designed ensuite. With three additional bedrooms including a room off the front hallway this home combines easy family living with plenty of practicality.



Terms and Conditions: Images shown on this brochure are approximate and for illustration purposes only, these plans may not be drawn to scale. Façades and other images on this brochure may be shown as optional upgrades or not included, additional fixtures and finishes that are featured on this document may not be included in the base cost such as landscaping, tiling, decking, furniture, feature lighting, pools, driveways etc. Hunter Homes reserves the right to change plans and inclusions at any time. All designs that are developed remain the property of Hunter Homes Pty Ltd under copyright law & we retain & claim all rights to these plans. Changing plans by 50% or more does not avoid legal responsibility for a copyright breach.

1300 BUY HOME

See our website for Display locations
www.hunterhomesnsw.com

love YOUR HUNTER HOME

Alpine 220