

HUNTER HOMES

live WITH HEART 



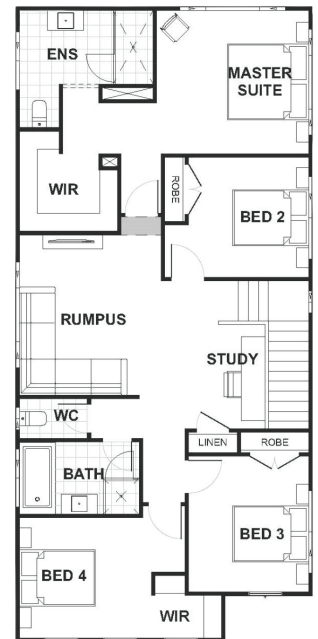
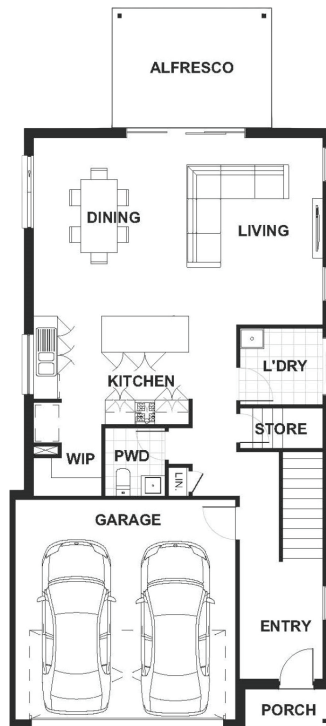
CLASSIC FACADE



Total (sqsq.)	27.01	Width (m)	8.17
Total (m²)	250.91	Length (m)	17.86

Description

The Tallowood 251 is a smartly designed two storey home that is certainly more than meets the eye! On the lower level of the home you will find an open plan living/dining area adjacent to the kitchen with multiple bench top areas, an island bench and walk in pantry. The dining and living area connect to the alfresco allowing the best of indoor and outdoor living. On the second floor you will find all four bedrooms with the master suite located towards the rear complete with a walk-in wardrobe and spacious ensuite. The top level includes another three bedrooms, with an oversized bedroom at the front of the home which is perfect for a guest room or teenagers retreat. Completing this top level is a generous rumpus room and a study area.



Terms and Conditions: Images shown on this brochure are approximate and for illustration purposes only, these plans may not be drawn to scale. Façades and other images on this brochure may be shown as optional upgrades or not included, additional fixtures and finishes that are featured on this document may not be included in the base cost such as landscaping, tiling, decking, furniture, feature lighting, pools, driveways etc. Hunter Homes reserves the right to change plans and inclusions at any time. All designs that are developed remain the property of Hunter Homes Pty Ltd under copyright law & we retain & claim all rights to these plans. Changing plans by 50% or more does not avoid legal responsibility for a copyright breach.

1300 BUY HOME

See our website for Display locations
www.hunterhomesnsw.com

love YOUR HUNTER HOME

Tallowood 251