

# HUNTER HOMES

live WITH HEART 



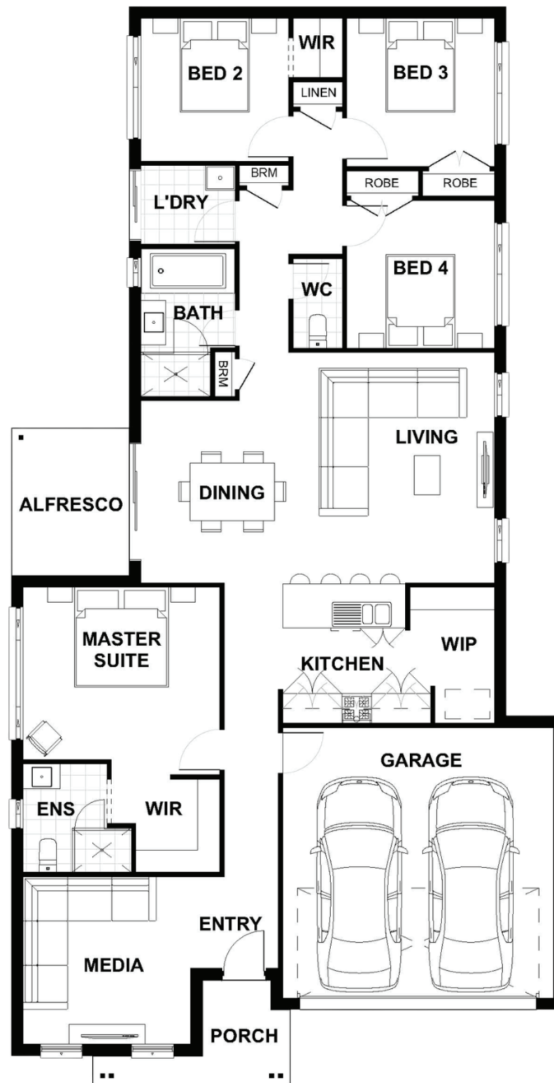
## GLENOAK FACADE V2



Total (sqsq.)	21.45	Width (m)	11.25
Total (m²)	199.25	Length (m)	21.92

### Description

The Melrose 200 is designed with families in mind. This four bedroom home has all of the kid's bedrooms located together at the rear of the home, making this a great safe haven and the perfect sleep zone. The master suite with a walk in robe and ensuite is located centrally within the home whilst still in close proximity to the other three bedrooms. The kitchen with a walk-in pantry and breakfast bar overlooks the living and dining rooms which connect to the alfresco. This design also offers two separate living areas.



**Terms and Conditions:** Images shown on this brochure are approximate and for illustration purposes only, these plans may not be drawn to scale. Façades and other images on this brochure may be shown as optional upgrades or not included, additional fixtures and finishes that are featured on this document may not be included in the base cost such as landscaping, tiling, decking, furniture, feature lighting, pools, driveways etc. Hunter Homes reserves the right to change plans and inclusions at any time. All designs that are developed remain the property of Hunter Homes Pty Ltd under copyright law & we retain & claim all rights to these plans. Changing plans by 50% or more does not avoid legal responsibility for a copyright breach.

1300 BUY HOME

See our website for Display locations  
[www.hunterhomesnsw.com](http://www.hunterhomesnsw.com)

love YOUR HUNTER HOME

Melrose 200