

HUNTER HOMES

live WITH HEART 



BOWMAN ALT FACADE



Total (sq.s.)	28.06	Width (m)	13.4
Total (m ²)	260.67	Length (m)	25.11

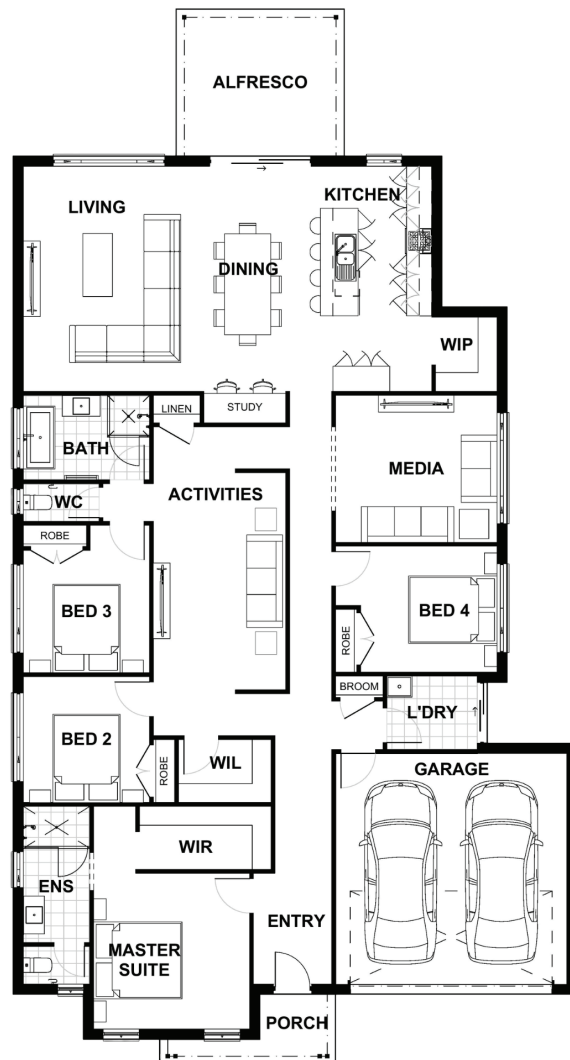
Description

The Allendale 260 is a design that meets all the needs of the modern-day family.

With four generous sized bedrooms, indulgent master suite and separate media and children's activities this home ticks all the boxes.

The Allendale also has the entertainer in mind, with an amazing kitchen, living and dining area stretched across the back of the home allowing for uninterrupted views of the backyard, while the children play outside or swim in the pool.

This home includes a chefs kitchen, walk in pantry, study and alfresco, huge walk in linen plus plenty of additional storage, everything needed and desired in a family home.



Terms and Conditions: Images shown on this brochure are approximate and for illustration purposes only, these plans may not be drawn to scale. Façades and other images on this brochure may be shown as optional upgrades or not included, additional fixtures and finishes that are featured on this document may not be included in the base cost such as landscaping, tiling, decking, furniture, feature lighting, pools, driveways etc. Hunter Homes reserves the right to change plans and inclusions at any time. All designs that are developed remain the property of Hunter Homes Pty Ltd under copyright law & we retain & claim all rights to these plans. Changing plans by 50% or more does not avoid legal responsibility for a copyright breach.

1300 BUY HOME

See our website for Display locations
www.hunterhomesnsw.com

love YOUR HUNTER HOME

Allendale 260