

HUNTER HOMES

live WITH HEART 



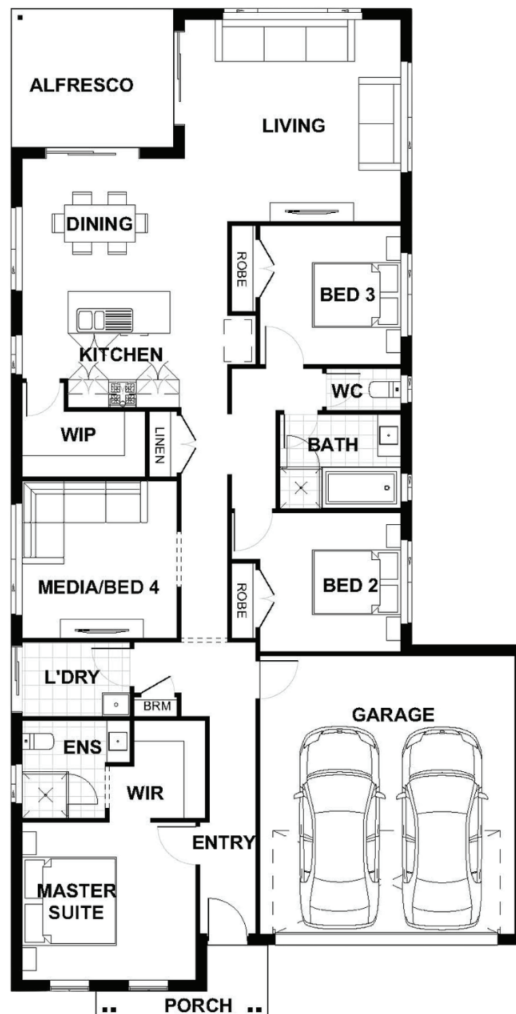
BOWMAN FACADE



Total (sq.s.)	23.05	Width (m)	11.06
Total (m ²)	214.13	Length (m)	22.07

Description

The Myall 213 is perfect for a first home buyer or those looking to downsize. This four-bedroom home is huge on value, offering a spacious open-plan kitchen, dining and living area which opens to the alfresco. Located at the front of the home is a dedicated media room. The master suite is at the heart of the home and contains a generous walk in robe and ensuite. Suited to most standard lot widths, the Myall 214 will have you entertaining your friends and family for years to come!



Terms and Conditions: Images shown on this brochure are approximate and for illustration purposes only, these plans may not be drawn to scale. Façades and other images on this brochure may be shown as optional upgrades or not included, additional fixtures and finishes that are featured on this document may not be included in the base cost such as landscaping, tiling, decking, furniture, feature lighting, pools, driveways etc. Hunter Homes reserves the right to change plans and inclusions at any time. All designs that are developed remain the property of Hunter Homes Pty Ltd under copyright law & we retain & claim all rights to these plans. Changing plans by 50% or more does not avoid legal responsibility for a copyright breach.

1300 BUY HOME

See our website for Display locations
www.hunterhomesnsw.com

love YOUR HUNTER HOME

Myall 213