

HUNTER HOMES

live WITH HEART 



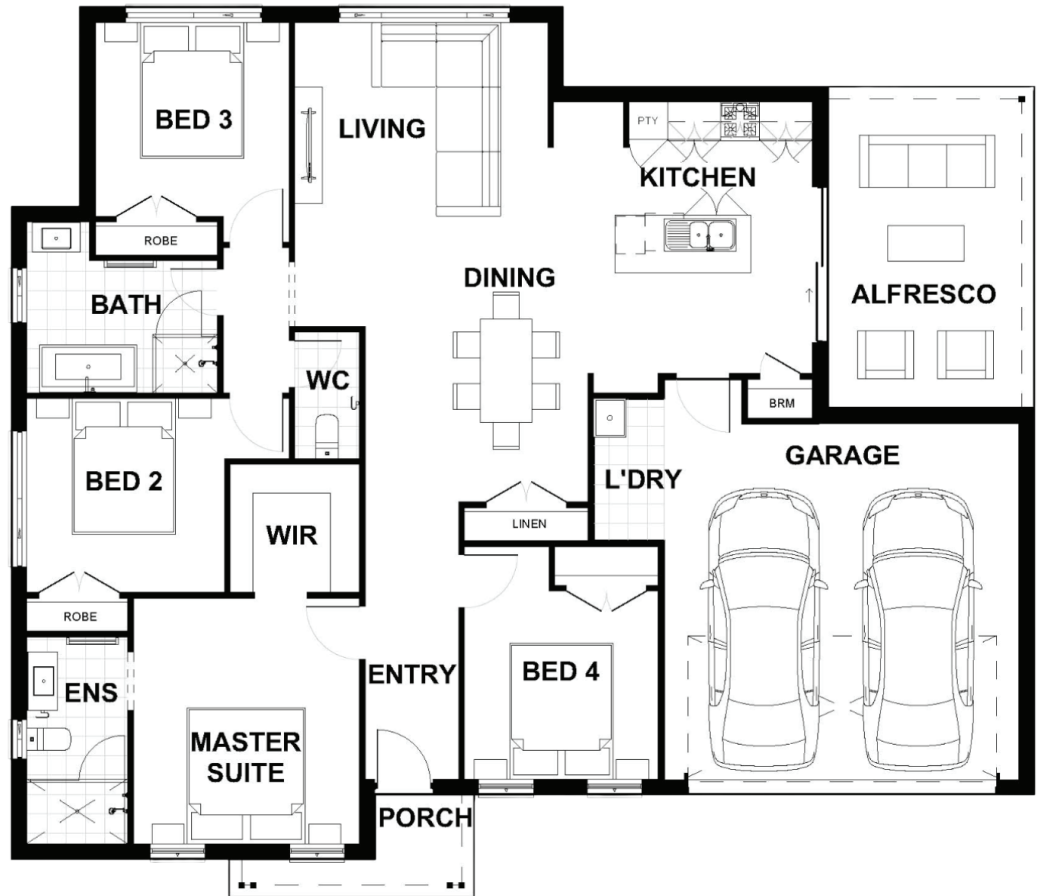
BOWMAN ALT FACADE



Total (sqsq.)	20.43	Width (m)	15.79
Total (m²)	189.84	Length (m)	13.79

Description

Affordable and appealing, the Hartley 190 is a first home-owner's dream with enough space to grow or for family to visit. Full of natural light, this is a home that draws everyone together with a large kitchen, open plan living and dining space that connects to the spacious alfresco. The alfresco is perfect for entertaining friends and is a welcoming area for family to hang out together after a busy day. The Hartley 189 has four bedrooms, including a private master suite with an ensuite and walk in robe, giving everyone their own space and tranquility.



Terms and Conditions: Images shown on this brochure are approximate and for illustration purposes only, these plans may not be drawn to scale. Façades and other images on this brochure may be shown as optional upgrades or not included, additional fixtures and finishes that are featured on this document may not be included in the base cost such as landscaping, tiling, decking, furniture, feature lighting, pools, driveways etc. Hunter Homes reserves the right to change plans and inclusions at any time. All designs that are developed remain the property of Hunter Homes Pty Ltd under copyright law & we retain & claim all rights to these plans. Changing plans by 50% or more does not avoid legal responsibility for a copyright breach.

1300 BUY HOME

See our website for Display locations
www.hunterhomesnsw.com

love YOUR HUNTER HOME

Hartley 190