

HUNTER HOMES

live WITH HEART 



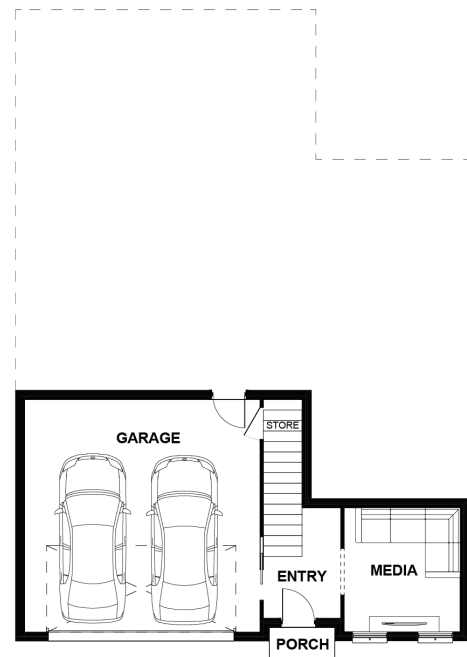
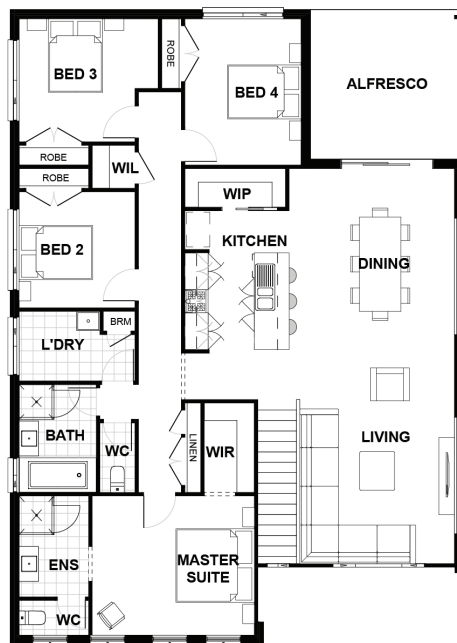
GEORGIAN FACADE



Total (sqsq.)	26.67	Width (m)	11.75
Total (m²)	247.73	Length (m)	16.41

Description

The split-level design of the Johnson 248 offers a remarkable street presence with perfect practicality. Designed to work with the upwards slope of your land, this is a home that you will fall in love with. The master suite, featuring a large walk in robe and spacious ensuite, is located to the front of the home, with three additional bedrooms grouped together to the rear. Featuring open plan living in generous proportions, this home includes a gourmet kitchen with a walk-in pantry. Located off the dining room opposite the kitchen you will have direct access to a spacious alfresco making this home ideal for entertaining guests. Downstairs you will find a private living room which has the option to convert to a rumpus allowing both privacy and room to grow.



Terms and Conditions: Images shown on this brochure are approximate and for illustration purposes only, these plans may not be drawn to scale. Façades and other images on this brochure may be shown as optional upgrades or not included, additional fixtures and finishes that are featured on this document may not be included in the base cost such as landscaping, tiling, decking, furniture, feature lighting, pools, driveways etc. Hunter Homes reserves the right to change plans and inclusions at any time. All designs that are developed remain the property of Hunter Homes Pty Ltd under copyright law & we retain & claim all rights to these plans. Changing plans by 50% or more does not avoid legal responsibility for a copyright breach.

1300 BUY HOME

See our website for Display locations
www.hunterhomesnsw.com

love YOUR HUNTER HOME

Johnson 248 Front Master