

# THE BRANXTON

*Bowman Alt Facade*

HUNTER  
HOMES



265

# THE BRANXTON

Bowman Alt Facade

## Description

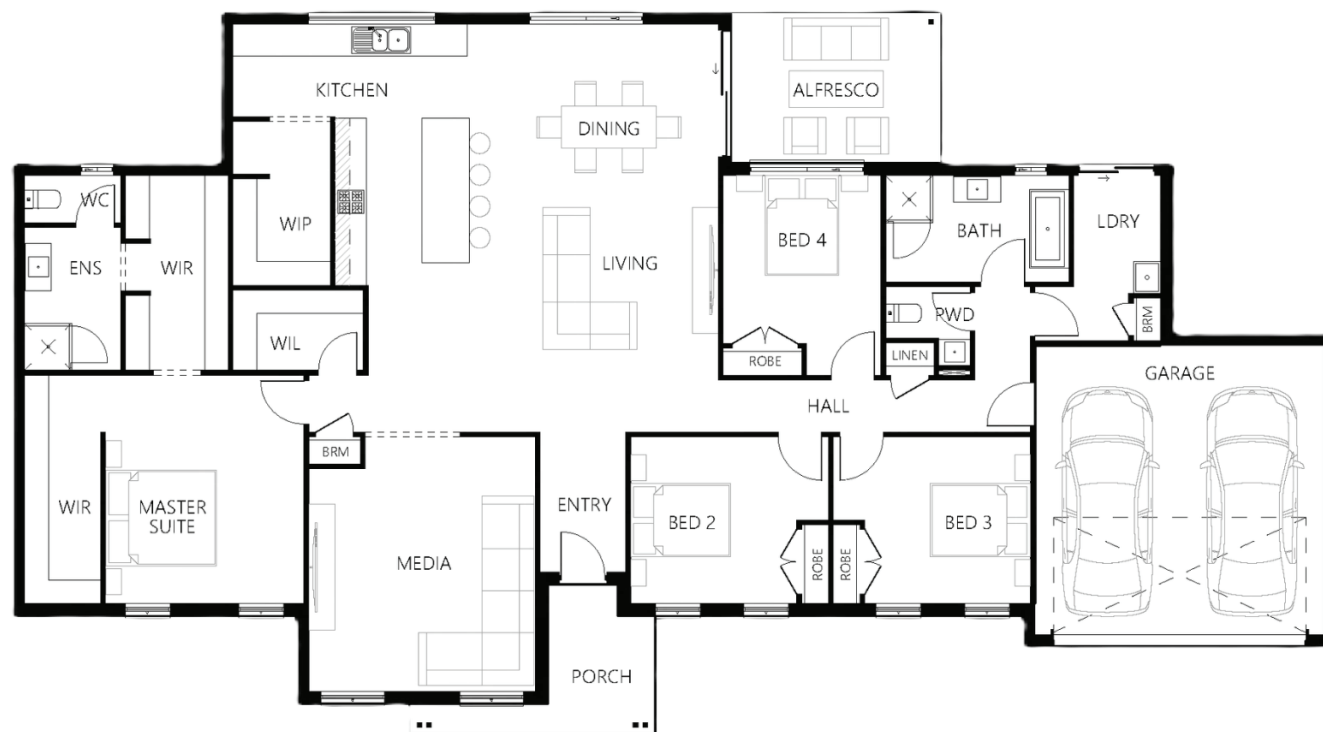
The ultimate family home, four generous bedrooms with master suite which includes a walk-through wardrobe and spacious ensuite positioned within its own wing of the home. The Branxton 265 design is the perfect home for those who require both space and functionality. With the addition of a media room off the open plan living and dining, as well as a stylish, central kitchen including two additional bench options with an island bench as well as butler's pantry, there's room to move, relax, and enjoy. For entertaining in the great outdoors there is a large undercover alfresco area that gives you the option to open the home for guests and family to enjoy. At the other end of the home you will find three additional bedrooms as well as generous family size bathroom with separate toilet. Designed for wider home sites or acreage style blocks, you cannot help but fall in love with the functionality of this home.

Bedrooms	4
Bathrooms	2
Car Garage	2

Total m²	265.19
Total sqs	28.55
Width (m)	25.2
Length (m)	13.69

# 265

[hunterhomesnsw.com](http://hunterhomesnsw.com)



Floor plan not drawn to scale

