

HUNTER HOMES

live WITH HEART 



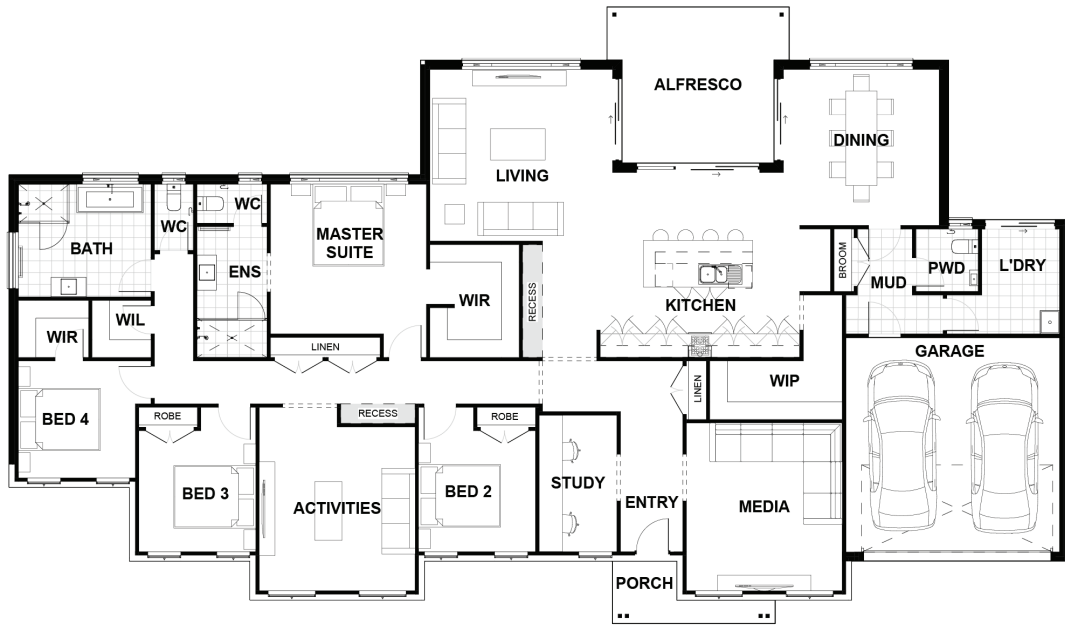
TARRAGON FACADE



Total (sqsq.)	34.38	Width (m)	27.2
Total (m²)	319.39	Length (m)	15.8

Description

Designed with grandeur in mind, the Waterside 319 keeps the family close. The master suite and three bedrooms are situated to one side of the home with an activity room adjacent to the master. The master has a generous walk in robe with a spacious ensuite. The family bathroom is large with a separate toilet and a walk-in linen cupboard offering additional storage. Off the entry is a home office to one side and a large media room to the other. Hidden behind the entry wall the home opens to an enormous open planned living and dining area. The galley style kitchen with an island bench and wrap around Walk in pantry connects both the living and dining area and opens to the large alfresco ideal for entertaining. With so many options to live with heart the Waterside 319 is a perfect family home.



Terms and Conditions: Images shown on this brochure are approximate and for illustration purposes only, these plans may not be drawn to scale. Façades and other images on this brochure may be shown as optional upgrades or not included, additional fixtures and finishes that are featured on this document may not be included in the base cost such as landscaping, tiling, decking, furniture, feature lighting, pools, driveways etc. Hunter Homes reserves the right to change plans and inclusions at any time. All designs that are developed remain the property of Hunter Homes Pty Ltd under copyright law & we retain & claim all rights to these plans. Changing plans by 50% or more does not avoid legal responsibility for a copyright breach.

1300 BUY HOME

See our website for Display locations
www.hunterhomesnsw.com

love YOUR HUNTER HOME

Waterside 319