

HUNTER HOMES

live WITH HEART 



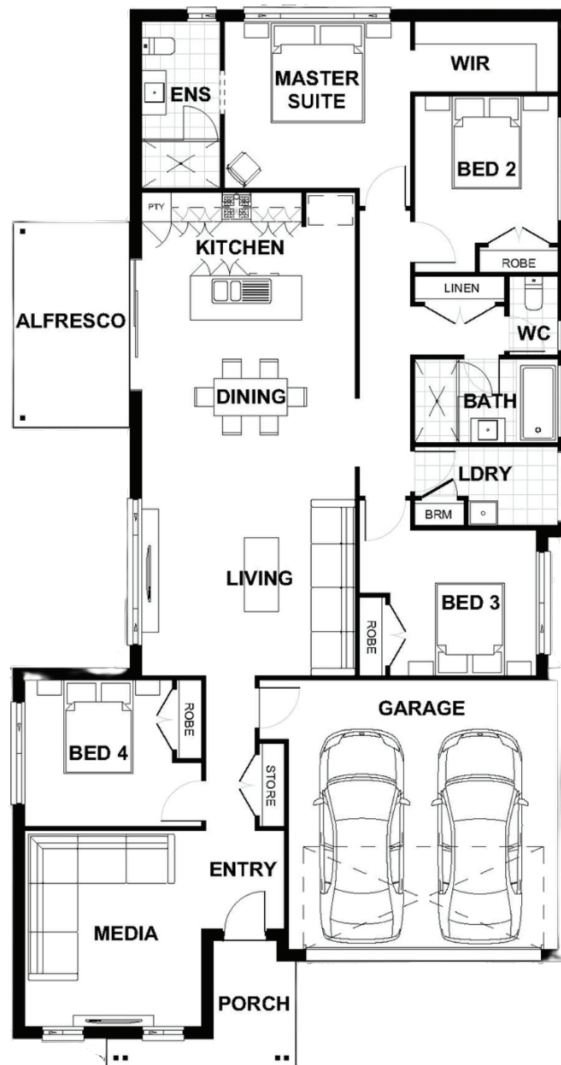
WISEMAN FACADE



Total (sq.s.)	22.49	Width (m)	11.36
Total (m ²)	208.93	Length (m)	21.6

Description

Full of natural light and sunny spaces, the Alpine 208 is a home that draws everyone together. Large open plan living and dining space joins seamlessly to the spacious alfresco. Perfect for entertaining friends, it is also a welcoming area for the family to hang out together and catch up after a busy day. The comfortable home theatre creates an additional living space away from the hub of the home which has been cleverly located at the front of the house. The Alpine 208 has four bedrooms, including a master suite at the rear with an ensuite and walk in robe. Combining easy family living with plenty of practicality, the Alpine is a generously proportioned home that makes every day a special one!



Terms and Conditions: Images shown on this brochure are approximate and for illustration purposes only, these plans may not be drawn to scale. Façades and other images on this brochure may be shown as optional upgrades or not included, additional fixtures and finishes that are featured on this document may not be included in the base cost such as landscaping, tiling, decking, furniture, feature lighting, pools, driveways etc. Hunter Homes reserves the right to change plans and inclusions at any time. All designs that are developed remain the property of Hunter Homes Pty Ltd under copyright law & we retain & claim all rights to these plans. Changing plans by 50% or more does not avoid legal responsibility for a copyright breach.

1300 BUY HOME

See our website for Display locations
www.hunterhomesnsw.com

love YOUR HUNTER HOME

Alpine 208