

# THE JOHNSON

*Georgian Facade*

HUNTER  
HOMES



248

# THE JOHNSON

Georgian Facade

## Description

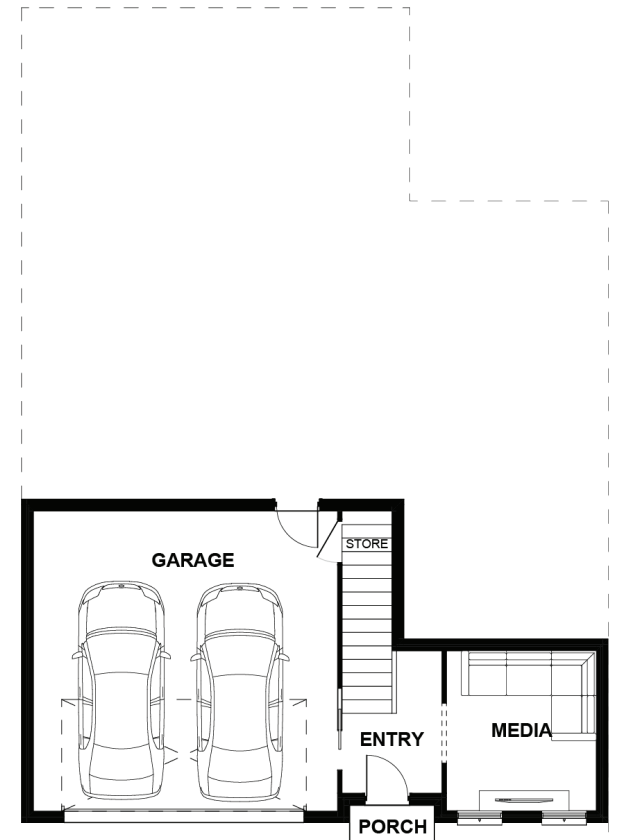
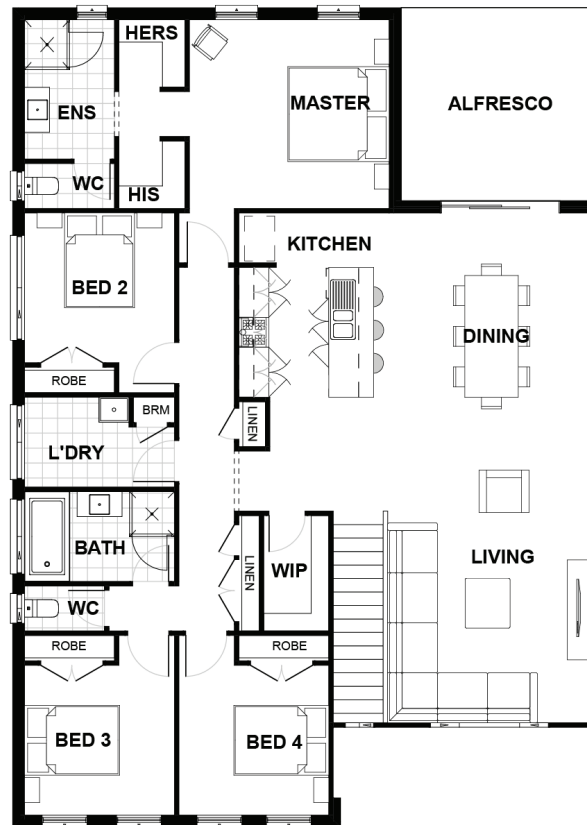
The split-level design of the Johnson 247 offers a striking street presence with perfect practicality. Designed to work with the upwards slope of your land, this is a home that you will fall in love with. The master suite, featuring his and hers walk in robe and a spacious ensuite, is located to the rear of the home. With two of the bedrooms located at the rear of the home and the third located off the master suite, this home is ideal for families. Featuring open plan living in generous proportions, this home includes a gourmet kitchen with a walk-in pantry. Located off the dining room opposite the kitchen you will have direct access to a spacious alfresco. Downstairs you will find a kid's hub allowing them to have their own area.

Bedrooms	4
Bathrooms	2
Car Garage	2

Total m <sup>2</sup>	247.73
Total sqs	26.67
Width (m)	11.75
Length (m)	16.41

# 248

[hunterhomesnsw.com](http://hunterhomesnsw.com)



Floor plan not drawn to scale

