

HUNTER HOMES

live WITH HEART 



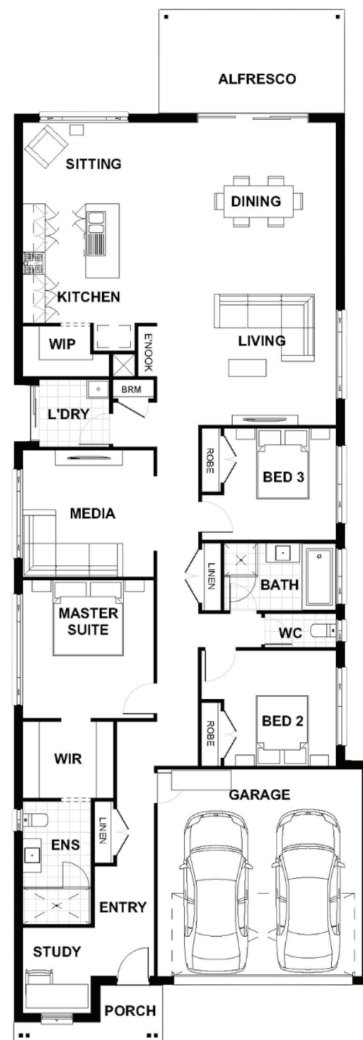
BOWMAN ALT FACADE



Total (sqsq.)	25.0	Width (m)	9.6
Total (m ²)	232.26	Length (m)	27.8

Description

Expertly designed for narrow lots - The Linton 232 design is a lot of house for a great price. Everything you need is featured in this home, with a home office to the front, three bedrooms to the center of the home, a separate media room which can be converted to a kids activity room and a large open plan living, dining and entertaining area featured at the back which connects to the alfresco area. This home has a stylish kitchen with an island bench and walk-in pantry overlooking the open plan entertaining space. The master suit designed centrally has a walk through robe into an ensuite. The home is ideal for young families wanting to keep the children close, investors or those looking to downsize with plenty of room for friends and family to visit.



Terms and Conditions: Images shown on this brochure are approximate and for illustration purposes only, these plans may not be drawn to scale. Façades and other images on this brochure may be shown as optional upgrades or not included, additional fixtures and finishes that are featured on this document may not be included in the base cost such as landscaping, tiling, decking, furniture, feature lighting, pools, driveways etc. Hunter Homes reserves the right to change plans and inclusions at any time. All designs that are developed remain the property of Hunter Homes Pty Ltd under copyright law & we retain & claim all rights to these plans. Changing plans by 50% or more does not avoid legal responsibility for a copyright breach.

1300 BUY HOME

See our website for Display locations
www.hunterhomesnsw.com

love YOUR HUNTER HOME

Linton 232