

THE LOVEDALE

Tuscany Facade

HUNTER
HOMES



245

THE LOVEDALE

Tuscany Facade

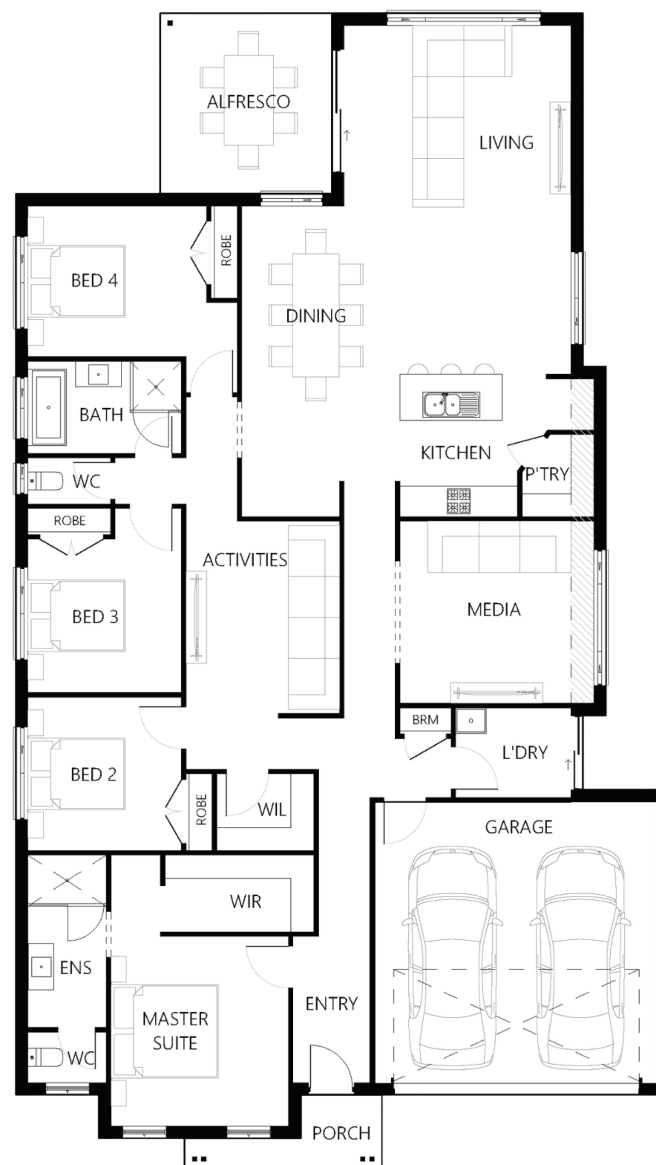
Description

The Lovedale 245 is the ultimate four bedroom family home you have been searching for. From the expansive living area to the cleverly located bedrooms, every part of this home says comfort and style. With a seamless flowing floor plan complete, the use of space will continually inspire the way you live. The generous family/living, dining and open plan kitchen draws family and guests to the light-filled heart of the home and out to the connected alfresco. Separate to the open plan living areas is a media room which is ideal for movie nights in. The master suite creates a sanctuary with a walk-in robe and spacious ensuite located at the front of the home for privacy. Your teenagers will love their dedicated wing located off the main living space. With three bedrooms centrally located to a children's activity room and a large family bathroom, this home provides plenty of space for the growing family.

Bedrooms	4
Bathrooms	2
Car Garage	2
<hr/>	
Total m²	244.56
Total sqs	26.33
Width (m)	12.63
Length (m)	22.63

245

hunterhomesnsw.com



Floor plan not drawn to scale

