

THE ALBION

Clifton Facade

HUNTER
HOMES



304

THE ALBION

Clifton Facade

Description

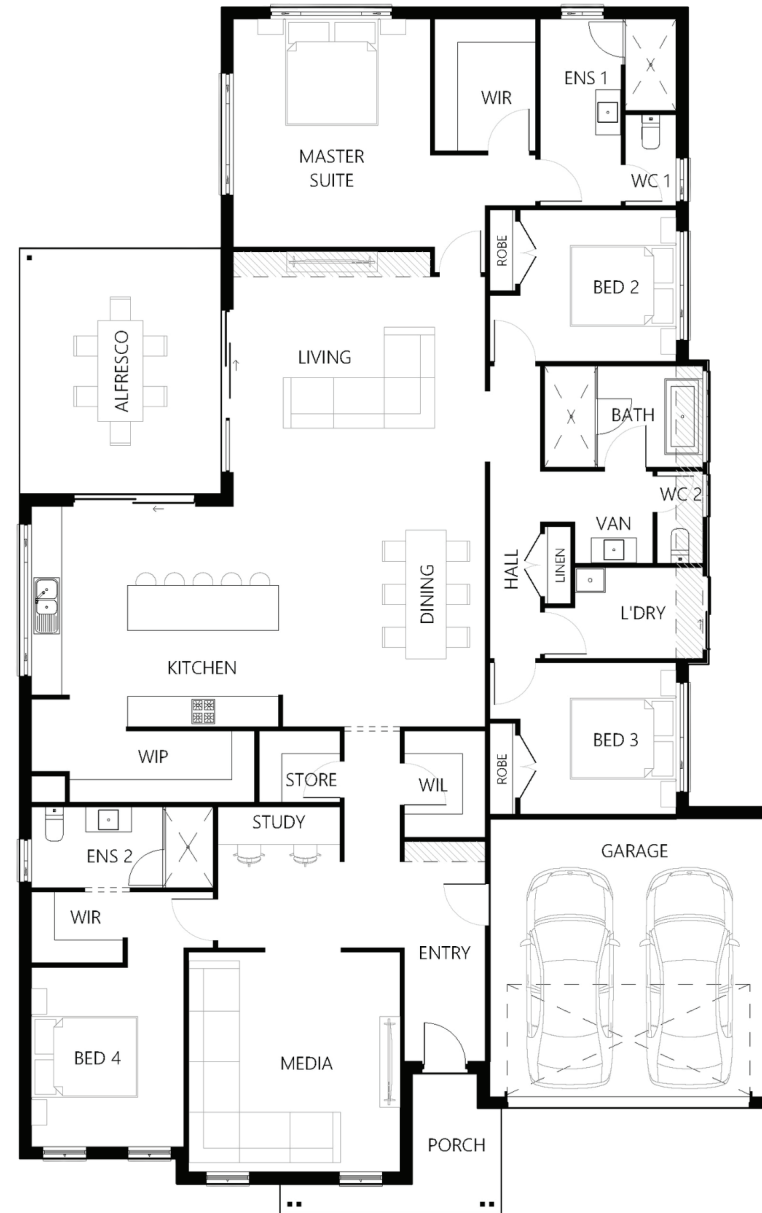
The Albion 304 is a spacious four bedroom, multi-functional family home with a combination of dedicated areas and open shared spaces. Parents will love the resort-style master suite at the rear of the home, with its views over the back garden, to include large walk in robe & ensuite. With a guest bedroom, ensuite and home theatre coming together at the front. This private area is destined to become a sought-after home away from home for visitors. The remaining bedrooms have easy access to the large family bathroom. The heart of the home is central, where the gourmet kitchen, living and dining blend to create a large, light-filled area flowing effortlessly to the alfresco.

Bedrooms	4
Bathrooms	3
Car Garage	2

Total m²	318.11
Total sqs	34.24
Width (m)	15.06
Length (m)	23.91

304

hunterhomesnsw.com



Floor plan not drawn to scale

