

THE HIGHLAND

Bowman Alt

HUNTER
HOMES



160

THE HIGHLAND

Bowman Alt

Description

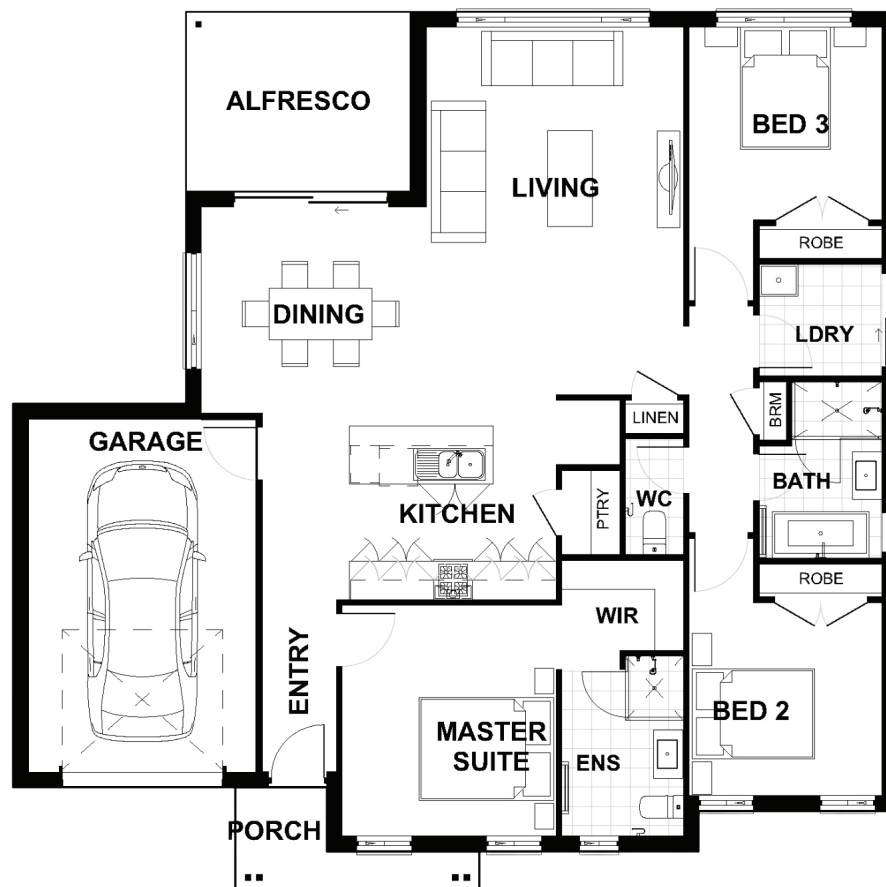
The Highland 160 is a home that has been designed with privacy in mind. The master suite is situated at the front of the home with a generous sized ensuite and walk in robe. The two remaining bedrooms are located to the side with each bedroom at the end of the connecting hallway offering privacy and space. The family bathroom and laundry are between the two bedrooms giving ease of access. The kitchen with an island bench and walk in pantry overlooks the airy living and dining which is connected to the alfresco. This home is the perfect design to live comfortably whilst having your own space. This home design opens to dual living and corner block configurations.

Bedrooms	3
Bathrooms	2
Car Garage	1

Total m ²	159.99
Total sqs	17.22
Width (m)	13.76
Length (m)	13.67

160

hunterhomesnsw.com



Floor plan not drawn to scale

