

# HUNTER HOMES

live WITH HEART 



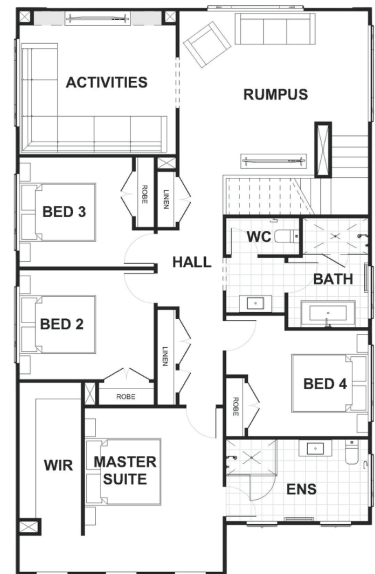
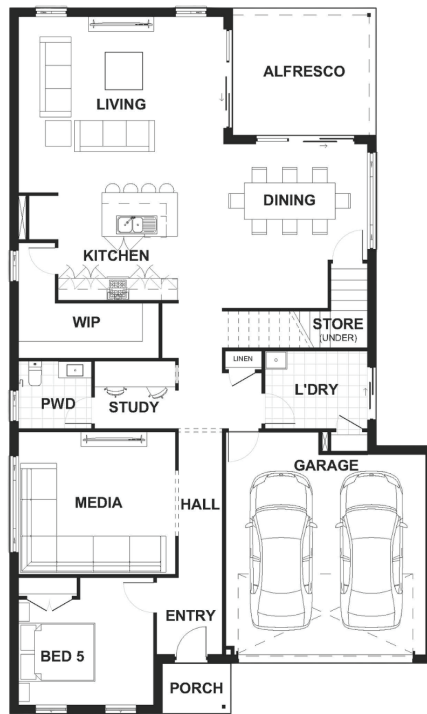
## PELLE FACADE



Total (sq.s.)	37.19	Width (m)	11.66
Total (m <sup>2</sup> )	345.49	Length (m)	19.38

### Description

The Valentino 345 is a five bedroom masterpiece design. The top level of this home holds a grand master suite which has a spacious ensuite. Three bedrooms are also located on this level which surround the family bathroom. At the top of the stairs you will be led into a rumpus and activity room which is ideal for a growing family. The ground level has a private bedroom located off the entry which can be used as a guest wing with a Media room and open plan living/dining at the rear. The kitchen has an oversized island bench and walk-in pantry with the living and dining room both connecting to the alfresco area.



**Terms and Conditions:** Images shown on this brochure are approximate and for illustration purposes only, these plans may not be drawn to scale. Façades and other images on this brochure may be shown as optional upgrades or not included, additional fixtures and finishes that are featured on this document may not be included in the base cost such as landscaping, tiling, decking, furniture, feature lighting, pools, driveways etc. Hunter Homes reserves the right to change plans and inclusions at any time. All designs that are developed remain the property of Hunter Homes Pty Ltd under copyright law & we retain & claim all rights to these plans. Changing plans by 50% or more does not avoid legal responsibility for a copyright breach.

1300 BUY HOME

See our website for Display locations  
[www.hunterhomesnsw.com](http://www.hunterhomesnsw.com)

love YOUR HUNTER HOME

Valentino 345