

HUNTER HOMES

live WITH HEART 



BURKE FACADE

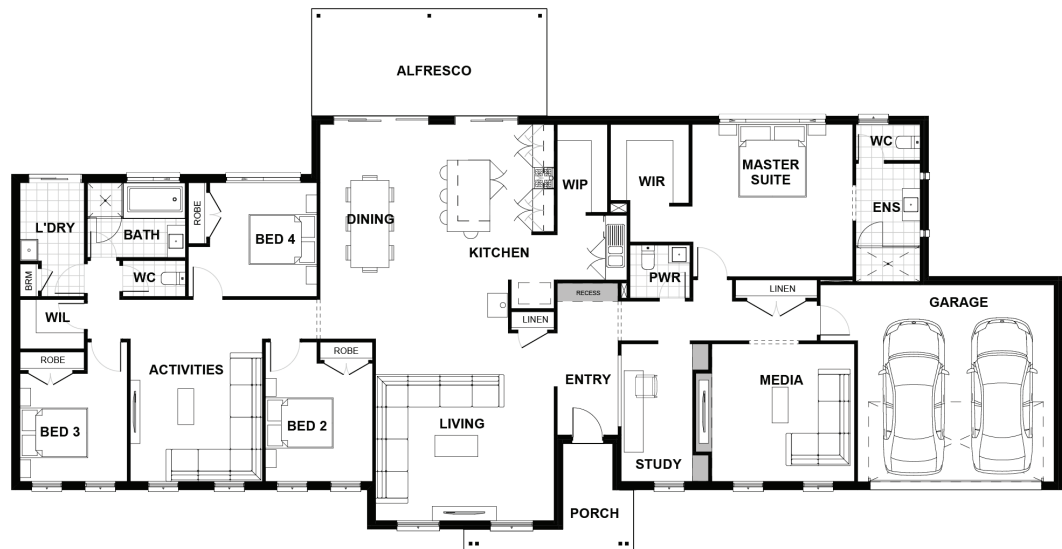


Total (sq.s.) 33.4 Width (m) 29.46

Total (m²) 310.24 Length (m) 15.17

Description

The Whittingham 310 is designed with multiple living options on a grand scale. The moment that you walk through the door you will fall in love with this home. The master suite is located to one side of the home complete with a generous ensuite and walk-in robe. Located adjacent to the master is a private media room and separate powder room creating the ideal entertainment hub. The living area is at the front of the home with the kitchen overlooking the grand island bench and dining area which opens to the generous alfresco. The additional three bedrooms are nestled together at the other end of the home and have a separate activities area which is perfect for when kids entertain friends. This design also features a personal home office space. This is certainly living at its finest.



Terms and Conditions: Images shown on this brochure are approximate and for illustration purposes only, these plans may not be drawn to scale. Façades and other images on this brochure may be shown as optional upgrades or not included, additional fixtures and finishes that are featured on this document may not be included in the base cost such as landscaping, tiling, decking, furniture, feature lighting, pools, driveways etc. Hunter Homes reserves the right to change plans and inclusions at any time. All designs that are developed remain the property of Hunter Homes Pty Ltd under copyright law & we retain & claim all rights to these plans. Changing plans by 50% or more does not avoid legal responsibility for a copyright breach.

1300 BUY HOME

See our website for Display locations
www.hunterhomesnsw.com

love YOUR HUNTER HOME

Whittingham 310