

HUNTER HOMES

live WITH HEART 



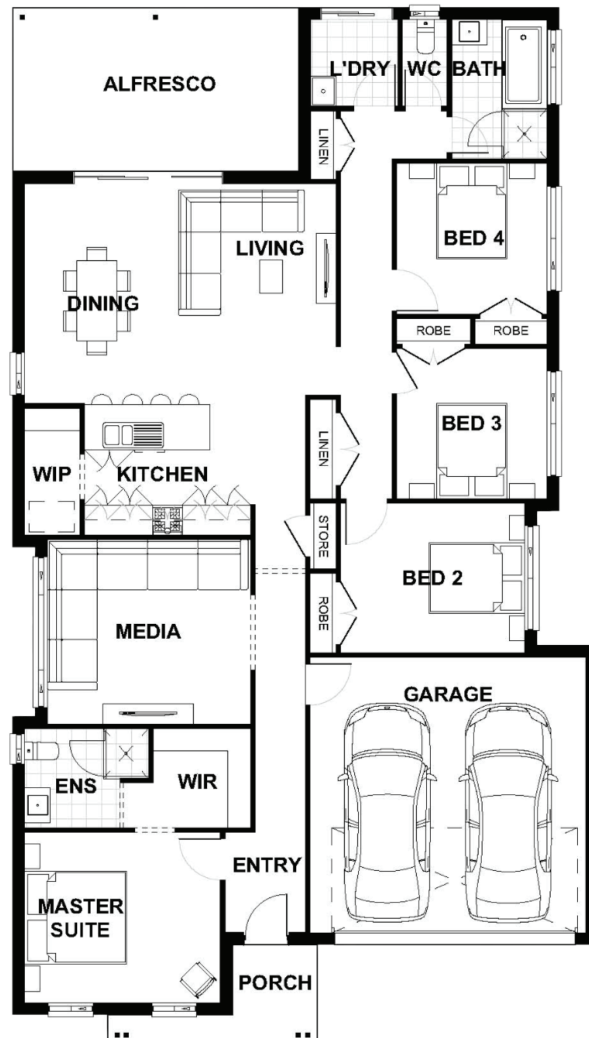
QUARTZ FACADE



Total (sq.s.)	23.29	Width (m)	11.66
Total (m ²)	216.4	Length (m)	20.69

Description

Bringing you contemporary family living at its best, the Oakdale 216 combines practicality, space and comfort! This design works effortlessly as a family home where the open plan living area presides over the stunning gourmet kitchen, the family/living and dining area which opens up to the alfresco. A comfortable media room, centrally located, is a perfect addition as the entertainment hub. With four bedrooms and features including a walk-in pantry, great sized bathroom and laundry, along with plenty of linen space will ensure that there is enough room and storage for anyone. Sitting comfortably at the front of the home, the beautiful master suite offers a perfect sanctuary.



Terms and Conditions: Images shown on this brochure are approximate and for illustration purposes only, these plans may not be drawn to scale. Façades and other images on this brochure may be shown as optional upgrades or not included, additional fixtures and finishes that are featured on this document may not be included in the base cost such as landscaping, tiling, decking, furniture, feature lighting, pools, driveways etc. Hunter Homes reserves the right to change plans and inclusions at any time. All designs that are developed remain the property of Hunter Homes Pty Ltd under copyright law & we retain & claim all rights to these plans. Changing plans by 50% or more does not avoid legal responsibility for a copyright breach.

1300 BUY HOME

See our website for Display locations
www.hunterhomesnsw.com

love YOUR HUNTER HOME

Oakdale 216